



# LCAT rabbit pAb

<b>Catalog No</b>	BYab-11375
<b>Isotype</b>	IgG
<b>Reactivity</b>	Human; Mouse;Rat
<b>Applications</b>	WB;ELISA;IHC
<b>Gene Name</b>	LCAT
<b>Protein Name</b>	LCAT
<b>Immunogen</b>	Synthesized peptide derived from human LCAT AA range: 6-56
<b>Specificity</b>	This antibody detects endogenous levels of LCAT at Human/Mouse/Rat
<b>Formulation</b>	Liquid in PBS containing 50% glycerol, 0.5% BSA and 0.02% sodium azide.
<b>Source</b>	Polyclonal, Rabbit,IgG
<b>Purification</b>	The antibody was affinity-purified from rabbit serum by affinity-chromatography using specific immunogen.
<b>Dilution</b>	WB 1:500-2000;IHC-p 1:50-300; ELISA 2000-20000
<b>Concentration</b>	1 mg/ml
<b>Purity</b>	≥90%
<b>Storage Stability</b>	-20°C/1 year
<b>Synonyms</b>	
<b>Observed Band</b>	
<b>Cell Pathway</b>	Secreted . Secreted into blood plasma (PubMed:3458198, PubMed:8820107, PubMed:10222237). Produced in astrocytes and secreted into cerebral spinal fluid (CSF) (PubMed:10222237). .
<b>Tissue Specificity</b>	Detected in blood plasma (PubMed:3458198, PubMed:8820107, PubMed:10222237). Detected in cerebral spinal fluid (at protein level) (PubMed:10222237). Detected in liver (PubMed:3797244, PubMed:3458198). Expressed mainly in brain, liver and testes.
<b>Function</b>	catalytic activity:Phosphatidylcholine + a sterol = 1-acylglycerophosphocholine + a sterol ester.,disease:Defects in LCAT are a cause of fish-eye disease (FED) [MIM:136120]; also known as dyslipoproteinemic corneal dystrophy or alpha-LCAT deficiency. FED is due to a partial LCAT deficiency that affects only alpha-LCAT activity. It is characterized by low plasma HDL and corneal opacities due to accumulation of cholesterol deposits in the cornea ('fish-eye').,disease:Defects in LCAT are the cause of lecithin-cholesterol acyltransferase deficiency (LCATD) [MIM:245900]; also called Norum disease.

Nanjing BYabscience technology Co.,Ltd



LCATD is a disorder of lipoprotein metabolism characterized by inadequate esterification of plasmatic cholesterol. Two clinical forms are recognized: familial LCAT deficiency and fish-eye disease. Familial LCAT deficiency is associated with a complete absence of alpha and beta LCAT activities and re

**Background**

This gene encodes the extracellular cholesterol esterifying enzyme, lecithin-cholesterol acyltransferase. The esterification of cholesterol is required for cholesterol transport. Mutations in this gene have been found to cause fish-eye disease as well as LCAT deficiency. [provided by RefSeq, Jul 2008],

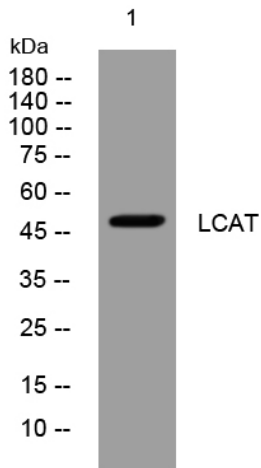
**matters needing attention**

Avoid repeated freezing and thawing!

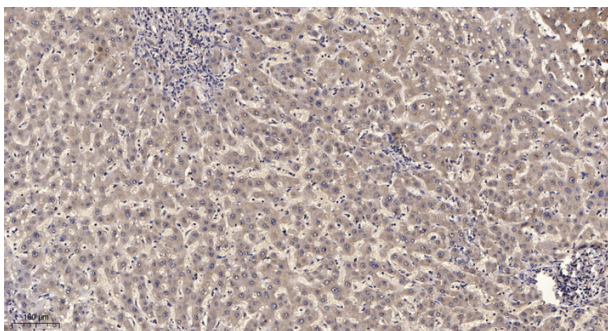
**Usage suggestions**

This product can be used in immunological reaction related experiments. For more information, please consult technical personnel.

**Products Images**



Western blot analysis of lysates from MCF-7 cells, primary antibody was diluted at 1:1000, 4° over night



Immunohistochemical analysis of paraffin-embedded human liver cancer. 1, Antibody was diluted at 1:200(4° overnight). 2, Tris-EDTA, pH9.0 was used for antigen retrieval. 3, Secondary antibody was diluted at 1:200(room temperature, 45min).