



MYH7B rabbit pAb

Catalog No	BYab-11371
Isotype	IgG
Reactivity	Human; Mouse
Applications	WB;IHC
Gene Name	MYH7B KIAA1512
Protein Name	MYH7B
Immunogen	Synthesized peptide derived from human MYH7B AA range: 606-656
Specificity	This antibody detects endogenous levels of MYH7B at Human/Mouse
Formulation	Liquid in PBS containing 50% glycerol, 0.5% BSA and 0.02% sodium azide.
Source	Polyclonal, Rabbit,IgG
Purification	The antibody was affinity-purified from rabbit serum by affinity-chromatography using specific immunogen.
Dilution	WB 1:500-2000;IHC-p 1:50-300
Concentration	1 mg/ml
Purity	≥90%
Storage Stability	-20°C/1 year
Synonyms	
Observed Band	
Cell Pathway	Membrane ; Peripheral membrane protein .
Tissue Specificity	Expressed in heart, skeletal muscle, testis, and all specific brain regions examined. Slightly lower expression was detected in ovary and kidney, and intermediate expression was detected in lung, pancreas, spleen and liver.
Function	caution:This protein sequence has been named 'Slow A' MYH14 (PubMed:11919279), but it also appears also as 'Slow B' MYH15 within the reference.,developmental stage:Found in fetal liver and brain.,function:Involved in muscle contraction.,miscellaneous:Expression does not vary in normal patients compared to patients with acute monocytic leukemia.,miscellaneous:The cardiac alpha isoform is a 'fast' ATPase myosin, while the beta isoform is a 'slow' ATPase.,similarity:Contains 1 IQ domain.,similarity:Contains 1 myosin head-like domain.,subunit:Muscle myosin is a hexameric protein that consists of 2 heavy chain subunits (MHC), 2 alkali light chain subunits (MLC) and 2 regulatory light chain subunits (MLC-2).,tissue specificity:Expressed in heart, skeletal muscle, testis, and all specific brain regions examined. Slightly lower expression was

Nanjing BYabscience technology Co.,Ltd



detected in ovary and kidney, and intermediate expres

Background

The myosin II molecule is a multi-subunit complex consisting of two heavy chains and four light chains. This gene encodes a heavy chain of myosin II, which is a member of the motor-domain superfamily. The heavy chain includes a globular motor domain, which catalyzes ATP hydrolysis and interacts with actin, and a tail domain in which heptad repeat sequences promote dimerization by interacting to form a rod-like alpha-helical coiled coil. This heavy chain subunit is a slow-twitch myosin. Alternatively spliced transcript variants have been found, but the full-length nature of these variants is not determined. [provided by RefSeq, Mar 2010],

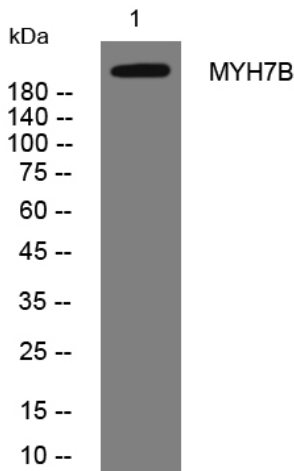
matters needing attention

Avoid repeated freezing and thawing!

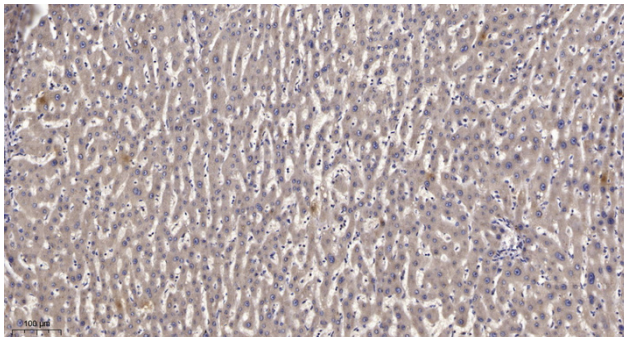
Usage suggestions

This product can be used in immunological reaction related experiments. For more information, please consult technical personnel.

Products Images



Western blot analysis of lysates from HuvEc cells, primary antibody was diluted at 1:1000, 4° over night



Immunohistochemical analysis of paraffin-embedded human liver cancer. 1, Antibody was diluted at 1:200(4° overnight). 2, Tris-EDTA, pH9.0 was used for antigen retrieval. 3, Secondary antibody was diluted at 1:200(room temperature, 45min).

Nanjing BYabscience technology Co.,Ltd