



PTN4 rabbit pAb

Catalog No	BYab-11365
Isotype	IgG
Reactivity	Human; Mouse
Applications	WB;IHC
Gene Name	PTPN4
Protein Name	PTN4
Immunogen	Synthesized peptide derived from human PTN4 AA range: 496-546
Specificity	This antibody detects endogenous levels of PTN4 at Human/Mouse
Formulation	Liquid in PBS containing 50% glycerol, 0.5% BSA and 0.02% sodium azide.
Source	Polyclonal, Rabbit,IgG
Purification	The antibody was affinity-purified from rabbit serum by affinity-chromatography using specific immunogen.
Dilution	WB 1:500-2000;IHC-p 1:50-300
Concentration	1 mg/ml
Purity	≥90%
Storage Stability	-20°C/1 year
Synonyms	
Observed Band	
Cell Pathway	Cell membrane ; Peripheral membrane protein ; Cytoplasmic side . Cytoplasm, cytoskeleton . Cytoplasm .
Tissue Specificity	
Function	catalytic activity:Protein tyrosine phosphate + H(2)O = protein tyrosine + phosphate.,function:May act at junctions between the membrane and the cytoskeleton.,similarity:Belongs to the protein-tyrosine phosphatase family. Non-receptor class subfamily.,similarity:Contains 1 FERM domain.,similarity:Contains 1 PDZ (DHR) domain.,similarity:Contains 1 tyrosine-protein phosphatase domain.,
Background	The protein encoded by this gene is a member of the protein tyrosine phosphatase (PTP) family. PTPs are known to be signaling molecules that regulate a variety of cellular processes including cell growth, differentiation, mitotic cycle, and oncogenic transformation. This protein contains a C-terminal PTP domain and an N-terminal domain homologous to the band 4.1 superfamily of

Nanjing BYabscience technology Co.,Ltd



cytoskeletal-associated proteins. This PTP has been shown to interact with glutamate receptor delta 2 and epsilon subunits, and is thought to play a role in signalling downstream of the glutamate receptors through tyrosine dephosphorylation. [provided by RefSeq, Jul 2008],

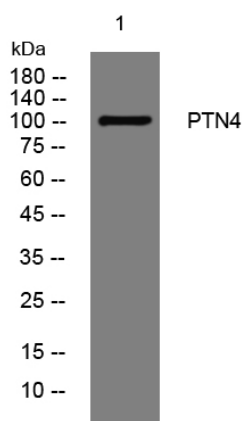
matters needing attention

Avoid repeated freezing and thawing!

Usage suggestions

This product can be used in immunological reaction related experiments. For more information, please consult technical personnel.

Products Images



Western blot analysis of lysates from HpeG2 cells, primary antibody was diluted at 1:1000, 4° over night



Immunohistochemical analysis of paraffin-embedded human oophoroma. 1, Antibody was diluted at 1:200(4° overnight). 2, Tris-EDTA, pH9.0 was used for antigen retrieval. 3, Secondary antibody was diluted at 1:200(room temperature, 45min).