



DDAH1 rabbit pAb

Catalog No	BYab-11357
Isotype	IgG
Reactivity	Human; Mouse;Rat
Applications	WB
Gene Name	DDAH1 DDAH
Protein Name	DDAH1
Immunogen	Synthesized peptide derived from human DDAH1 AA range: 115-165
Specificity	This antibody detects endogenous levels of DDAH1 at Human/Mouse/Rat
Formulation	Liquid in PBS containing 50% glycerol, 0.5% BSA and 0.02% sodium azide.
Source	Polyclonal, Rabbit,IgG
Purification	The antibody was affinity-purified from rabbit serum by affinity-chromatography using specific immunogen.
Dilution	WB 1: 500-2000
Concentration	1 mg/ml
Purity	≥90%
Storage Stability	-20°C/1 year
Synonyms	
Observed Band	
Cell Pathway	mitochondrion,cytosol,extracellular exosome,
Tissue Specificity	Detected in brain, liver, kidney and pancreas, and at low levels in skeletal muscle.
Function	catalytic activity:N(omega),N(omega)-dimethyl-L-arginine + H(2)O = dimethylamine + L-citrulline.,cofactor:Binds 1 zinc ion.,function:Hydrolyzes N(G),N(G)-dimethyl-L-arginine (ADMA) and N(G)-monomethyl-L-arginine (MMA) which act as inhibitors of NOS. Has therefore a role in nitric oxide generation.,similarity:Belongs to the DDAH family.,subunit:Monomer.,
Background	This gene belongs to the dimethylarginine dimethylaminohydrolase (DDAH) gene family. The encoded enzyme plays a role in nitric oxide generation by regulating cellular concentrations of methylarginines, which in turn inhibit nitric oxide synthase activity. [provided by RefSeq, Jul 2008],

Nanjing BYabscience technology Co.,Ltd



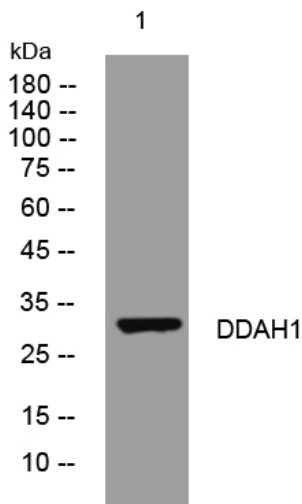
matters needing attention

Avoid repeated freezing and thawing!

Usage suggestions

This product can be used in immunological reaction related experiments. For more information, please consult technical personnel.

Products Images



Western blot analysis of lysates from U2OS cells, primary antibody was diluted at 1:1000, 4° over night