



SDC3 rabbit pAb

Catalog No	BYab-11355
Isotype	IgG
Reactivity	Human; Mouse;Rat
Applications	WB;IHC
Gene Name	SDC3 KIAA0468
Protein Name	SDC3
Immunogen	Synthesized peptide derived from human SDC3 AA range: 131-181
Specificity	This antibody detects endogenous levels of SDC3 at Human/Mouse/Rat
Formulation	Liquid in PBS containing 50% glycerol, 0.5% BSA and 0.02% sodium azide.
Source	Polyclonal, Rabbit,IgG
Purification	The antibody was affinity-purified from rabbit serum by affinity-chromatography using specific immunogen.
Dilution	WB 1:500-2000;IHC-p 1:50-300
Concentration	1 mg/ml
Purity	≥90%
Storage Stability	-20°C/1 year
Synonyms	
Observed Band	
Cell Pathway	Cell membrane; Single-pass type I membrane protein.
Tissue Specificity	Expressed in the nervous system, the adrenal gland, and the spleen.
Function	function:Cell surface proteoglycan that may bear heparan sulfate (By similarity). May have a role in the organization of cell shape by affecting the actin cytoskeleton, possibly by transferring signals from the cell surface in a sugar-dependent mechanism.,PTM:O-glycosylated within the Thr/Ser-rich region which could interact with lectin domains on other molecules.,similarity:Belongs to the syndecan proteoglycan family.,tissue specificity:Expressed in the nervous system, the adrenal gland, and the spleen.,
Background	The protein encoded by this gene belongs to the syndecan proteoglycan family. It may play a role in the organization of cell shape by affecting the actin cytoskeleton, possibly by transferring signals from the cell surface in a sugar-dependent mechanism. Allelic variants of this gene have been associated

Nanjing BYabscience technology Co.,Ltd



with obesity. [provided by RefSeq, Oct 2009],

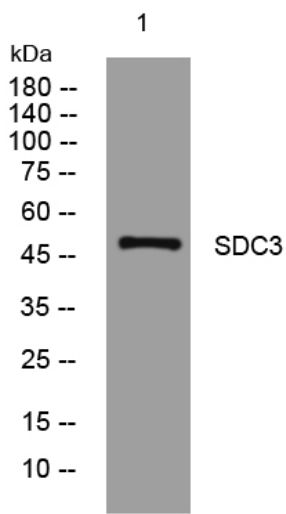
matters needing attention

Avoid repeated freezing and thawing!

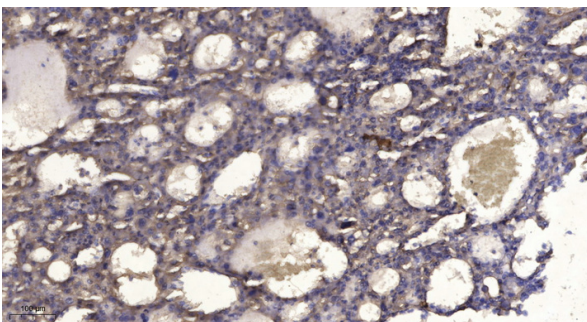
Usage suggestions

This product can be used in immunological reaction related experiments. For more information, please consult technical personnel.

Products Images



Western blot analysis of lysates from HpeG2 cells, primary antibody was diluted at 1:1000, 4° over night



Immunohistochemical analysis of paraffin-embedded human liver cancer. 1, Antibody was diluted at 1:200(4° overnight). 2, Tris-EDTA, pH9.0 was used for antigen retrieval. 3, Secondary antibody was diluted at 1:200(room temperature, 45min).