



ARID2 rabbit pAb

| | |
|---------------------------|--|
| Catalog No | BYab-11340 |
| Isotype | IgG |
| Reactivity | Human;Rat;Mouse; |
| Applications | WB |
| Gene Name | ARID2 KIAA1557 |
| Protein Name | ARID2 |
| Immunogen | Synthesized peptide derived from human ARID2 AA range: 309-359 |
| Specificity | This antibody detects endogenous levels of ARID2 at Human |
| Formulation | Liquid in PBS containing 50% glycerol, 0.5% BSA and 0.02% sodium azide. |
| Source | Polyclonal, Rabbit,IgG |
| Purification | The antibody was affinity-purified from rabbit serum by affinity-chromatography using specific immunogen. |
| Dilution | WB 1: 500-2000 |
| Concentration | 1 mg/ml |
| Purity | ≥90% |
| Storage Stability | -20°C/1 year |
| Synonyms | |
| Observed Band | |
| Cell Pathway | Nucleus. |
| Tissue Specificity | Highly expressed in heart. |
| Function | developmental stage:Up-regulated in adult heart (at protein level).,function:Involved in transcriptional activation and repression of select genes by chromatin remodeling (alteration of DNA-nucleosome topology). Required for the stability of the SWI/SNF chromatin remodeling complex SWI/SNF-B (PBAF). May be involved in targeting the complex to different genes. May be involved in regulating transcriptional activation of cardiac genes.,sequence caution:Differs from position 1094 onward for unknown reason.,similarity:Contains 1 ARID domain.,similarity:Contains 1 C2H2-type zinc finger.,subunit:Component of the SWI/SNF-B (PBAF) chromatin remodeling complex, at least composed of SMARCA4/BRG1, SMARCB1/BAF47, ACTL6A/BAF53A or ACTL6B/BAF53B, SMARCE1/BAF57, SMARCD1/BAF60A, SMARCD2/BAF60B, perhaps SMARCD3/BAF60C, SMARCC1/BAF155, |

Nanjing BYabscience technology Co.,Ltd



SMARCC2/BAF170, PB1/BAF180, ARID2/BAF200, ARID1A/BAF250A or ARID1B/BAF2

Background

ARID2 is a subunit of the PBAF chromatin-remodeling complex (see BAF180; MIM 606083), which facilitates ligand-dependent transcriptional activation by nuclear receptors (Yan et al., 2005 [PubMed 15985610]).[supplied by OMIM, Mar 2008],

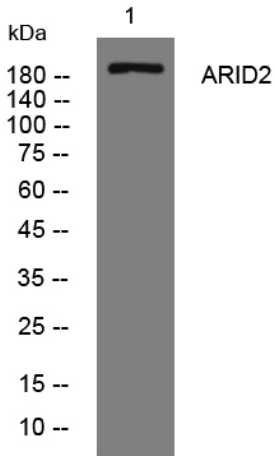
matters needing attention

Avoid repeated freezing and thawing!

Usage suggestions

This product can be used in immunological reaction related experiments. For more information, please consult technical personnel.

Products Images



Western blot analysis of lysates from HeLa cells, primary antibody was diluted at 1:1000, 4° over night