



# FNDC1 rabbit pAb

<b>Catalog No</b>	BYab-11337
<b>Isotype</b>	IgG
<b>Reactivity</b>	Human;Rat
<b>Applications</b>	WB
<b>Gene Name</b>	FNDC1 FNDC2 KIAA1866 MEL4B3
<b>Protein Name</b>	FNDC1
<b>Immunogen</b>	Synthesized peptide derived from human FNDC1 AA range: 988-1038
<b>Specificity</b>	This antibody detects endogenous levels of FNDC1 at Human/Rat
<b>Formulation</b>	Liquid in PBS containing 50% glycerol, 0.5% BSA and 0.02% sodium azide.
<b>Source</b>	Polyclonal, Rabbit,IgG
<b>Purification</b>	The antibody was affinity-purified from rabbit serum by affinity-chromatography using specific immunogen.
<b>Dilution</b>	WB 1: 500-2000
<b>Concentration</b>	1 mg/ml
<b>Purity</b>	≥90%
<b>Storage Stability</b>	-20°C/1 year
<b>Synonyms</b>	
<b>Observed Band</b>	
<b>Cell Pathway</b>	Secreted .
<b>Tissue Specificity</b>	Almost absent from healthy skin; especially in epidermal keratinocytes, skin fibroblasts or endothelial cells and is barely detectable in benign melanocytic naevi. Expressed in the stroma close to skin tumors, in the tumor cells themselves and in the epidermis of psoriasis.
<b>Function</b>	caution:It is uncertain whether Met-1 or Met-53 is the initiator.,function:May be an activator of G protein signaling.,induction:By TGF-beta present in the melanoma cell conditioned medium (MCCM).,similarity:Contains 5 fibronectin type-III domains.,tissue specificity:Almost absent from healthy skin; especially in epidermal keratinocytes, skin fibroblasts or endothelial cells and is barely detectable in benign melanocytic naevi. Expressed in the stroma close to skin tumors, in the tumor cells themselves and in the epidermis of psoriasis.,

## Background

Nanjing BYabscience technology Co.,Ltd



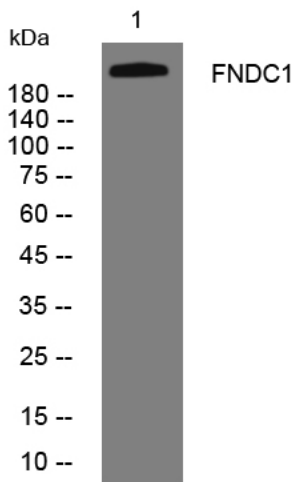
**matters needing attention**

Avoid repeated freezing and thawing!

**Usage suggestions**

This product can be used in immunological reaction related experiments. For more information, please consult technical personnel.

## Products Images



Western blot analysis of lysates from PC-12 cells, primary antibody was diluted at 1:1000, 4° over night