



bS35D2 rabbit pA

Catalog No	BYab-11333
Isotype	IgG
Reactivity	Human; Mouse
Applications	WB
Gene Name	SLC35D2 HFRC UGTREL8
Protein Name	S35D2
Immunogen	Synthesized peptide derived from human S35D2 AA range: 267-317
Specificity	This antibody detects endogenous levels of S35D2 at Human/Mouse
Formulation	Liquid in PBS containing 50% glycerol, 0.5% BSA and 0.02% sodium azide.
Source	Polyclonal, Rabbit,IgG
Purification	The antibody was affinity-purified from rabbit serum by affinity-chromatography using specific immunogen.
Dilution	WB 1: 500-2000
Concentration	1 mg/ml
Purity	≥90%
Storage Stability	-20°C/1 year
Synonyms	
Observed Band	
Cell Pathway	Golgi apparatus membrane ; Multi-pass membrane protein .
Tissue Specificity	Highly expressed in heart, kidney, small intestine, placenta, lung and peripheral blood leukocyte. Weakly expressed in skeletal muscle and spleen. Not expressed in brain, colon and thymus.
Function	function:Antiporter transporting nucleotide sugars such as UDP-N-acetylglucosamine (UDP-GlcNAc), UDP-glucose (UDP-Glc) and GDP-mannose (GDP-Man) pooled in the cytosol into the lumen of the Golgi in exchange for the corresponding nucleosides monophosphates (UMP for UDP-sugars and GMP for GDP-sugars). May take part in heparan sulfate synthesis by supplying UDP-Glc-NAc, the donor substrate, and thus be involved in growth factor signaling.,similarity:Belongs to the TPT transporter family. SLC35D subfamily.,tissue specificity:Highly expressed in heart, kidney, small intestine, placenta, lung and peripheral blood leukocyte. Weakly expressed in skeletal muscle and spleen. Not expressed in brain, colon and thymus.,

Nanjing BYabscience technology Co.,Ltd



Background

Nucleotide sugars, which are synthesized in the cytosol or the nucleus, are high-energy donor substrates for glycosyltransferases located in the lumen of the endoplasmic reticulum and Golgi apparatus. Translocation of nucleotide sugars from the cytosol into the lumen compartment is mediated by specific nucleotide sugar transporters, such as SLC35D2 (Suda et al., 2004 [PubMed 15082721]).[supplied by OMIM, Mar 2008],

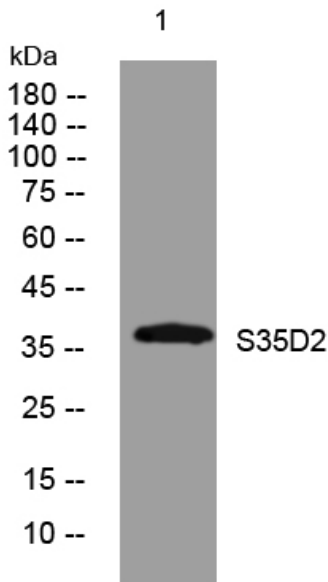
matters needing attention

Avoid repeated freezing and thawing!

Usage suggestions

This product can be used in immunological reaction related experiments. For more information, please consult technical personnel.

Products Images



Western blot analysis of lysates from HpeG2 cells, primary antibody was diluted at 1:1000, 4° over night