



# MTDC rabbit pAb

<b>Catalog No</b>	BYab-11332
<b>Isotype</b>	IgG
<b>Reactivity</b>	Human; Mouse
<b>Applications</b>	WB;IHC
<b>Gene Name</b>	MTHFD2 NMDMC
<b>Protein Name</b>	MTDC
<b>Immunogen</b>	Synthesized peptide derived from human MTDC AA range: 121-171
<b>Specificity</b>	This antibody detects endogenous levels of MTDC at Human/Mouse
<b>Formulation</b>	Liquid in PBS containing 50% glycerol, 0.5% BSA and 0.02% sodium azide.
<b>Source</b>	Polyclonal, Rabbit,IgG
<b>Purification</b>	The antibody was affinity-purified from rabbit serum by affinity-chromatography using specific immunogen.
<b>Dilution</b>	WB 1:500-2000;IHC-p 1:50-300
<b>Concentration</b>	1 mg/ml
<b>Purity</b>	≥90%
<b>Storage Stability</b>	-20°C/1 year
<b>Synonyms</b>	
<b>Observed Band</b>	
<b>Cell Pathway</b>	Mitochondrion.
<b>Tissue Specificity</b>	
<b>Function</b>	catalytic activity:5,10-methenyltetrahydrofolate + H(2)O = 10-formyltetrahydrofolate.,catalytic activity:5,10-methylenetetrahydrofolate + NAD(+) = 5,10-methenyltetrahydrofolate + NADH.,cofactor:Magnesium.,developmental stage:Expressed only in developing normal tissues.,miscellaneous:This NAD-dependent bifunctional enzyme has very different kinetic properties than the larger NADP-dependent trifunctional enzyme and is unique in that it requires formation of an enzyme-magnesium complex to allow binding of NAD.,similarity:Belongs to the tetrahydrofolate dehydrogenase/cyclohydrolase family.,subunit:Homodimer.,
<b>Background</b>	This gene encodes a nuclear-encoded mitochondrial bifunctional enzyme with methylenetetrahydrofolate dehydrogenase and methenyltetrahydrofolate

Nanjing BYabscience technology Co.,Ltd



cyclohydrolase activities. The enzyme functions as a homodimer and is unique in its absolute requirement for magnesium and inorganic phosphate. Formation of the enzyme-magnesium complex allows binding of NAD. Alternative splicing results in two different transcripts, one protein-coding and the other not protein-coding. This gene has a pseudogene on chromosome 7. [provided by RefSeq, Mar 2009],

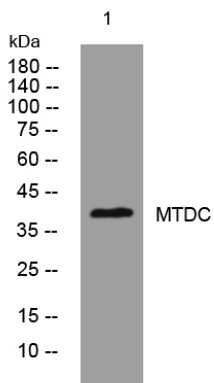
**matters needing attention**

Avoid repeated freezing and thawing!

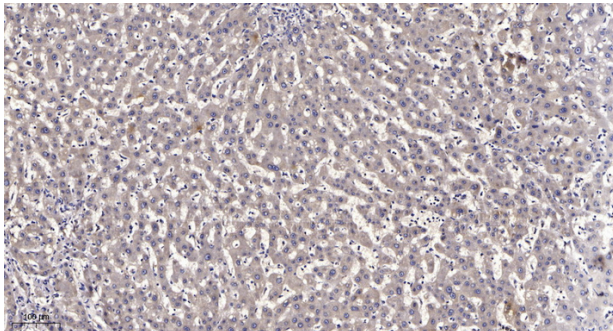
**Usage suggestions**

This product can be used in immunological reaction related experiments. For more information, please consult technical personnel.

## Products Images



Western blot analysis of lysates from 293T cells, primary antibody was diluted at 1:1000, 4° over night



Immunohistochemical analysis of paraffin-embedded human liver cancer. 1, Antibody was diluted at 1:200(4° overnight). 2, Tris-EDTA, pH9.0 was used for antigen retrieval. 3, Secondary antibody was diluted at 1:200(room temperature, 45min).