



BT3A3 rabbit pAb

Catalog No	BYab-11331
Isotype	IgG
Reactivity	Human;Rat;Mouse;
Applications	WB
Gene Name	BTN3A3 BTF3
Protein Name	BT3A3
Immunogen	Synthesized peptide derived from human BT3A3 AA range: 148-198
Specificity	This antibody detects endogenous levels of BT3A3 at Human
Formulation	Liquid in PBS containing 50% glycerol, 0.5% BSA and 0.02% sodium azide.
Source	Polyclonal, Rabbit,IgG
Purification	The antibody was affinity-purified from rabbit serum by affinity-chromatography using specific immunogen.
Dilution	WB 1: 500-2000
Concentration	1 mg/ml
Purity	≥90%
Storage Stability	-20°C/1 year
Synonyms	
Observed Band	
Cell Pathway	Cell membrane ; Single-pass type I membrane protein .
Tissue Specificity	Detected in peripheral blood mononuclear cells and in T-cells (at protein level). Detected in spleen and lymphocytes.
Function	similarity:Belongs to the immunoglobulin superfamily. BTN/MOG family.,similarity:Contains 1 B30.2/SPRY domain.,similarity:Contains 2 Ig-like V-type (immunoglobulin-like) domains.,
Background	The butyrophilin (BTN) genes are a group of major histocompatibility complex (MHC)-associated genes that encode type I membrane proteins with 2 extracellular immunoglobulin (Ig) domains and an intracellular B30.2 (PRYSPRY) domain. Three subfamilies of human BTN genes are located in the MHC class I region: the single-copy BTN1A1 gene (MIM 601610) and the BTN2 (e.g., BTN2A1; MIM 613590) and BTN3 (e.g., BNT3A3) genes, which have undergone tandem duplication, resulting in 3 copies of each (summary by Smith et al., 2010 [PubMed 20208008]).[supplied by OMIM, Nov 2010],

Nanjing BYabscience technology Co.,Ltd



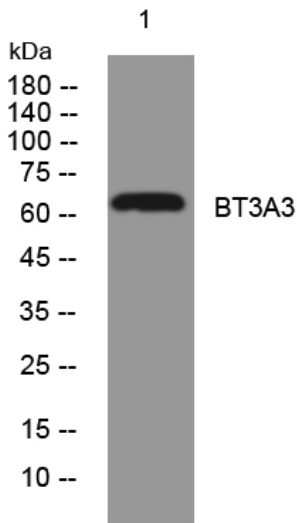
matters needing attention

Avoid repeated freezing and thawing!

Usage suggestions

This product can be used in immunological reaction related experiments. For more information, please consult technical personnel.

Products Images



Western blot analysis of lysates from HeLa cells, primary antibody was diluted at 1:1000, 4° over night