



UT1 rabbit pAb

Catalog No	BYab-11329
Isotype	IgG
Reactivity	Human; Mouse;Rat
Applications	WB
Gene Name	SLC14A1 HUT11 JK RACH1 UT1 UTE
Protein Name	UT1
Immunogen	Synthesized peptide derived from human UT1 AA range: 54-104
Specificity	This antibody detects endogenous levels of UT1 at Human/Mouse/Rat
Formulation	Liquid in PBS containing 50% glycerol, 0.5% BSA and 0.02% sodium azide.
Source	Polyclonal, Rabbit,IgG
Purification	The antibody was affinity-purified from rabbit serum by affinity-chromatography using specific immunogen.
Dilution	WB 1: 500-2000
Concentration	1 mg/ml
Purity	≥90%
Storage Stability	-20°C/1 year
Synonyms	
Observed Band	
Cell Pathway	Cell membrane ; Multi-pass membrane protein . Basolateral cell membrane ; Multi-pass membrane protein . Restricted to the basolateral membrane in various portions of the urothelium. .
Tissue Specificity	Detected in erythrocytes (at protein level). Erythrocytes.
Function	function:Specialized low-affinity urea transporter. Mediates urea transport in erythrocytes.,online information:Blood group antigen gene mutation database,polymorphism:SLC14A1 is responsible for the Kidd blood group system. The molecular basis of the Jk(a)/Jk(b) blood group antigens is a single variation in position 280; Asp-280 corresponds to Jk(a) and Asn-280 to Jk(b).,tissue specificity:Erythrocytes.,
Background	The protein encoded by this gene is a membrane transporter that mediates urea transport in erythrocytes. This gene forms the basis for the Kidd blood group system. [provided by RefSeq, Mar 2009],

Nanjing BYabscience technology Co.,Ltd



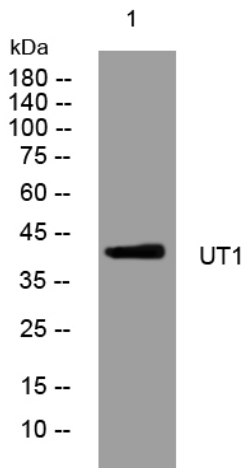
matters needing attention

Avoid repeated freezing and thawing!

Usage suggestions

This product can be used in immunological reaction related experiments. For more information, please consult technical personnel.

Products Images



Western blot analysis of lysates from HeLa cells, primary antibody was diluted at 1:1000, 4° over night