



TMX2 rabbit pAb

| | |
|----------------------------------|--|
| Catalog No | BYab-11325 |
| Isotype | IgG |
| Reactivity | Human; Mouse;Rat |
| Applications | WB |
| Gene Name | TMX2 TXNDC14 CGI-31 My009 PIG26 PSEC0045 UNQ237/PRO270 |
| Protein Name | TMX2 |
| Immunogen | Synthesized peptide derived from human TMX2 AA range: 41-91 |
| Specificity | This antibody detects endogenous levels of TMX2 at Human/Mouse/Rat |
| Formulation | Liquid in PBS containing 50% glycerol, 0.5% BSA and 0.02% sodium azide. |
| Source | Polyclonal, Rabbit,IgG |
| Purification | The antibody was affinity-purified from rabbit serum by affinity-chromatography using specific immunogen. |
| Dilution | WB 1: 500-2000 |
| Concentration | 1 mg/ml |
| Purity | ≥90% |
| Storage Stability | -20°C/1 year |
| Synonyms | |
| Observed Band | |
| Cell Pathway | Endoplasmic reticulum membrane ; Single-pass type I membrane protein . Mitochondrion membrane . Localizes to endoplasmic reticulum mitochondria-associated membrane (MAMs) that connect the endoplasmic reticulum and the mitochondria. . |
| Tissue Specificity | Widely expressed. |
| Function | domain:The di-lysine motif confers endoplasmic reticulum localization for type I membrane proteins.,domain:The thioredoxin domain lacks the 2 redox-active cysteines, suggesting that it lacks thioredoxin activity.,similarity:Contains 1 thioredoxin domain.,tissue specificity:Widely expressed., |
| Background | |
| matters needing attention | Avoid repeated freezing and thawing! |

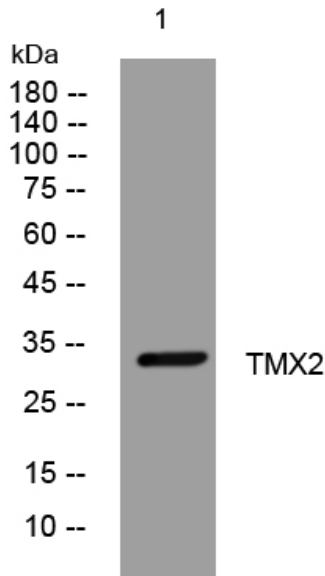
Nanjing BYabscience technology Co.,Ltd



Usage suggestions

This product can be used in immunological reaction related experiments. For more information, please consult technical personnel.

Products Images



Western blot analysis of lysates from SW480 cells, primary antibody was diluted at 1:1000, 4° over night.