



SCMC1 rabbit pAb

Catalog No	BYab-11319
Isotype	IgG
Reactivity	Human; Mouse
Applications	WB;ELISA;IHC
Gene Name	SLC25A24 APC1 MCSC1 SCAMC1
Protein Name	SCMC1
Immunogen	Synthesized peptide derived from human SCMC1 AA range: 162-212
Specificity	This antibody detects endogenous levels of SCMC1 at Human/Mouse
Formulation	Liquid in PBS containing 50% glycerol, 0.5% BSA and 0.02% sodium azide.
Source	Polyclonal, Rabbit,IgG
Purification	The antibody was affinity-purified from rabbit serum by affinity-chromatography using specific immunogen.
Dilution	WB 1:500-2000;IHC-p 1:50-300; ELISA 2000-20000
Concentration	1 mg/ml
Purity	≥90%
Storage Stability	-20°C/1 year
Synonyms	
Observed Band	
Cell Pathway	Mitochondrion inner membrane ; Multi-pass membrane protein .
Tissue Specificity	Present in various cell lines (at protein level). Expressed in all tissues tested. Highly expressed in testis, expressed at intermediate level in small intestine and pancreas, and weakly expressed in kidney, spleen, liver, skeletal muscle and heart.
Function	function:Calcium-dependent mitochondrial solute carrier. Mitochondrial solute carriers shuttle metabolites, nucleotides, and cofactors through the mitochondrial inner membrane. May act as a ATP-Mg/Pi exchanger that mediates the transport of Mg-ATP in exchange for phosphate, catalyzing the net uptake or efflux of adenine nucleotides into or from the mitochondria.,similarity:Belongs to the mitochondrial carrier family.,similarity:Contains 3 Solcar repeats.,similarity:Contains 4 EF-hand domains.,tissue specificity:Present in various cell lines (at protein level). Expressed in all tissues tested. Highly expressed in testis, expressed at intermediate level in small intestine and pancreas, and weakly expressed in kidney, spleen, liver, skeletal muscle and

Nanjing BYabscience technology Co.,Ltd



heart.,

Background

This gene encodes a carrier protein that transports ATP-Mg exchanging it for phosphate. Multiple transcript variants encoding different isoforms have been found for this gene. [provided by RefSeq, May 2012],

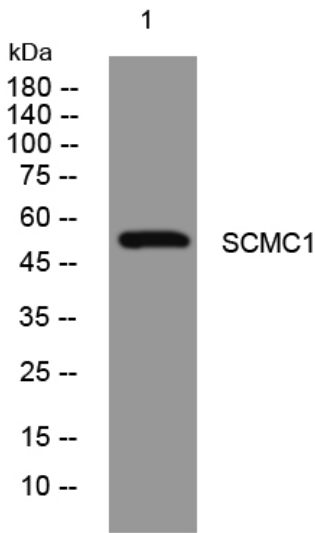
matters needing attention

Avoid repeated freezing and thawing!

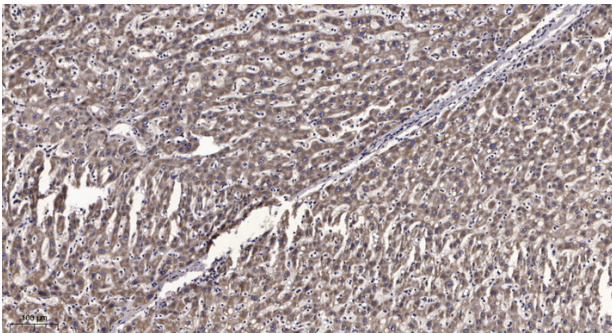
Usage suggestions

This product can be used in immunological reaction related experiments. For more information, please consult technical personnel.

Products Images



Western blot analysis of lysates from Jarkat cells, primary antibody was diluted at 1:1000, 4° over night



Immunohistochemical analysis of paraffin-embedded human liver cancer. 1, Antibody was diluted at 1:200(4° overnight). 2, Tris-EDTA, pH9.0 was used for antigen retrieval. 3, Secondary antibody was diluted at 1:200(room temperature, 45min).