



VP37C rabbit pAb

Catalog No	BYab-11312
Isotype	IgG
Reactivity	Human; Mouse
Applications	WB
Gene Name	VPS37C PML39
Protein Name	VP37C
Immunogen	Synthesized peptide derived from human VP37C AA range: 220-270
Specificity	This antibody detects endogenous levels of VP37C at Human/Mouse
Formulation	Liquid in PBS containing 50% glycerol, 0.5% BSA and 0.02% sodium azide.
Source	Polyclonal, Rabbit,IgG
Purification	The antibody was affinity-purified from rabbit serum by affinity-chromatography using specific immunogen.
Dilution	WB 1: 500-2000
Concentration	1 mg/ml
Purity	≥90%
Storage Stability	-20°C/1 year
Synonyms	
Observed Band	
Cell Pathway	Late endosome membrane ; Peripheral membrane protein . Probably associates with membranes. Recruited to the plasma membrane by HIV-1.
Tissue Specificity	
Function	function:Component of the ESCRT-I complex, a regulator of vesicular trafficking process. Required for the sorting of endocytic ubiquitinated cargos into multivesicular bodies. May be involved in cell growth and differentiation.,similarity:Belongs to the VPS37 family.,similarity:Contains 1 VPS37 C-terminal domain.,subcellular location:Probably associates with membranes. Recruited to the plasma membrane by HIV-1.,subunit:Component of the ESCRT-I complex (endosomal sorting complex required for transport I) which consists of TSG101, VPS28, a VPS37 protein (VPS37A to -D) and a FAM125/MVB12 protein (FAM125A or -B) in a 1:1:1:1 stoichiometry. Interacts with TSG101, VPS28, FAM125A and FAM125B. Interacts with HGS and STAM2. Interacts with CEP55.,

Nanjing BYabscience technology Co.,Ltd



Background

VPS37C is a subunit of ESCRT-I (endosomal sorting complex required for transport I), a complex in the class E vacuolar protein sorting (VPS) pathway required for sorting ubiquitinated transmembrane proteins into internal vesicles of multivesicular bodies (Eastman et al., 2005 [PubMed 15509564]).[supplied by OMIM, Mar 2008],

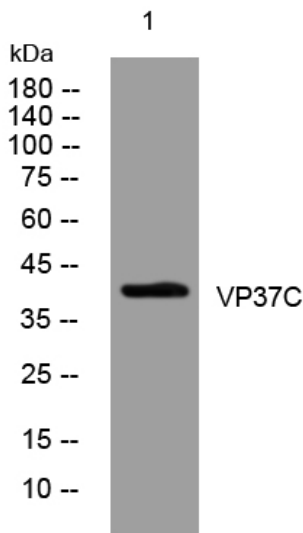
matters needing attention

Avoid repeated freezing and thawing!

Usage suggestions

This product can be used in immunological reaction related experiments. For more information, please consult technical personnel.

Products Images



Western blot analysis of lysates from AD293 cells, primary antibody was diluted at 1:1000, 4° over night