



# M4A6A rabbit pAb

|                           |  |
|---------------------------|--|
| <b>Catalog No</b>         | BYab-11308   |
| <b>Isotype</b>            | IgG  |
| <b>Reactivity</b>         | Human;Rat;Mouse;   |
| <b>Applications</b>       | WB   |
| <b>Gene Name</b>          | MS4A6A 4SPAN3 CD20L3 MS4A6 CDA01 MSTP090   |
| <b>Protein Name</b>       | M4A6A  |
| <b>Immunogen</b>          | Synthesized peptide derived from human M4A6A AA range: 8-58  |
| <b>Specificity</b>        | This antibody detects endogenous levels of M4A6A at Human  |
| <b>Formulation</b>        | Liquid in PBS containing 50% glycerol, 0.5% BSA and 0.02% sodium azide.  |
| <b>Source</b>             | Polyclonal, Rabbit,IgG   |
| <b>Purification</b>       | The antibody was affinity-purified from rabbit serum by affinity-chromatography using specific immunogen.  |
| <b>Dilution</b>           | WB 1: 500-2000   |
| <b>Concentration</b>      | 1 mg/ml  |
| <b>Purity</b>             | ≥90%   |
| <b>Storage Stability</b>  | -20°C/1 year   |
| <b>Synonyms</b>           |  |
| <b>Observed Band</b>      |  |
| <b>Cell Pathway</b>       | Membrane; Multi-pass membrane protein.   |
| <b>Tissue Specificity</b> | Variable expression in some B-cell, myelomonocytic, and erythroleukemia cell lines.  |
| <b>Function</b>           | function:May be involved in signal transduction as a component of a multimeric receptor complex.,similarity:Belongs to the MS4A family.,tissue specificity:Variable expression in some B-cell, myelomonocytic, and erythroleukemia cell lines.,  |
| <b>Background</b>         | This gene encodes a member of the membrane-spanning 4A gene family. Members of this nascent protein family are characterized by common structural features and similar intron/exon splice boundaries and display unique expression patterns among hematopoietic cells and nonlymphoid tissues. The gene encoding this protein is localized to 11q12.1, among a cluster of family members. Alternative splicing of this gene results in several transcript variants that encode different protein isoforms. [provided by RefSeq, Oct 2011], |

Nanjing BYabscience technology Co.,Ltd



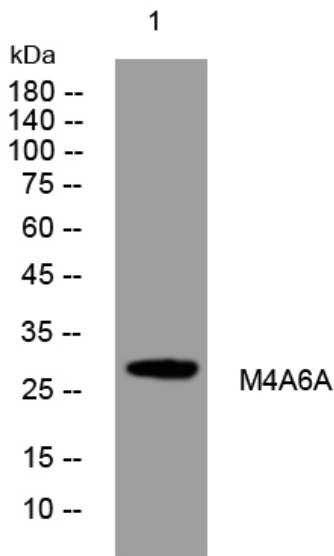
**matters needing attention**

Avoid repeated freezing and thawing!

**Usage suggestions**

This product can be used in immunological reaction related experiments. For more information, please consult technical personnel.

**Products Images**



Western blot analysis of lysates from HEK293 cells, primary antibody was diluted at 1:1000, 4° over night