



TWF1 rabbit pAb

Catalog No	BYab-11306
Isotype	IgG
Reactivity	Human; Mouse;Rat
Applications	WB
Gene Name	TWF1 PTK9
Protein Name	TWF1
Immunogen	Synthesized peptide derived from human TWF1 AA range: 179-229
Specificity	This antibody detects endogenous levels of TWF1 at Human/Mouse/Rat
Formulation	Liquid in PBS containing 50% glycerol, 0.5% BSA and 0.02% sodium azide.
Source	Polyclonal, Rabbit,IgG
Purification	The antibody was affinity-purified from rabbit serum by affinity-chromatography using specific immunogen.
Dilution	WB 1: 500-2000
Concentration	1 mg/ml
Purity	≥90%
Storage Stability	-20°C/1 year
Synonyms	
Observed Band	
Cell Pathway	Cytoplasm. Cytoplasm, cytoskeleton . Diffuse cytoplasmic localization with perinuclear and G-actin-rich cortical actin structures sublocalization. Also found at membrane ruffles and cell-cell contacts (By similarity). .
Tissue Specificity	Expressed at high levels in the colon, testis, ovary, prostate and lung. Expressed at lower levels in the brain, bladder and heart. Not detected in liver.
Function	caution:Was originally (PubMed:7507208) thought to have protein tyrosine kinase activity.,function:Actin-binding protein involved in motile and morphological processes. Inhibits actin polymerization, likely by sequestering G-actin. By capping the barbed ends of filaments, it also regulates motility. Seems to play an important role in clathrin-mediated endocytosis and distribution of endocytic organelles..online information:Molecular embrace -Issue 73 of August 2006,PTM:Phosphorylated on serine and threonine residues.,similarity:Belongs to the actin-binding proteins ADF family. Twinfilin subfamily.,similarity:Contains 2 ADF-H domains.,subcellular location:Diffuse cytoplasmic localization with perinuclear and G-actin-rich cortical actin structures sublocalization. Also found at

Nanjing BYabscience technology Co.,Ltd



membrane ruffles and cell-cell contacts.,subunit:Interacts with G-actin; ADP-actin form and capping protein (CP).

Background

This gene encodes twinfilin, an actin monomer-binding protein conserved from yeast to mammals. Studies of the mouse counterpart suggest that this protein may be an actin monomer-binding protein, and its localization to cortical G-actin-rich structures may be regulated by the small GTPase RAC1. [provided by RefSeq, Jul 2008],

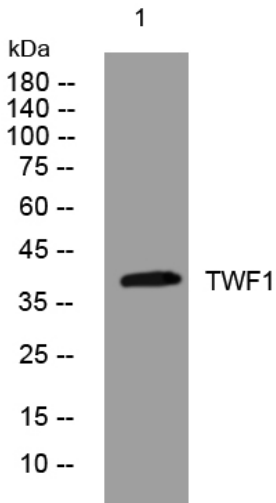
matters needing attention

Avoid repeated freezing and thawing!

Usage suggestions

This product can be used in immunological reaction related experiments. For more information, please consult technical personnel.

Products Images



Western blot analysis of lysates from MCF-7 cells, primary antibody was diluted at 1:1000, 4° over night