



# INT3 rabbit pAb

<b>Catalog No</b>	BYab-11303
<b>Isotype</b>	IgG
<b>Reactivity</b>	Human; Mouse
<b>Applications</b>	WB
<b>Gene Name</b>	INTS3 C1orf193 C1orf60
<b>Protein Name</b>	INT3
<b>Immunogen</b>	Synthesized peptide derived from human INT3 AA range: 417-467
<b>Specificity</b>	This antibody detects endogenous levels of INT3 at Human/Mouse
<b>Formulation</b>	Liquid in PBS containing 50% glycerol, 0.5% BSA and 0.02% sodium azide.
<b>Source</b>	Polyclonal, Rabbit,IgG
<b>Purification</b>	The antibody was affinity-purified from rabbit serum by affinity-chromatography using specific immunogen.
<b>Dilution</b>	WB 1: 500-2000
<b>Concentration</b>	1 mg/ml
<b>Purity</b>	≥90%
<b>Storage Stability</b>	-20°C/1 year
<b>Synonyms</b>	
<b>Observed Band</b>	
<b>Cell Pathway</b>	Nucleus . Cytoplasm . Localizes to nuclear foci following DNA damage.
<b>Tissue Specificity</b>	
<b>Function</b>	function:Component of the Integrator complex, a complex involved in the small nuclear RNAs (snRNA) U1 and U2 transcription and in their 3'-box-dependent processing. The Integrator complex is associated with the C-terminal domain (CTD) of RNA polymerase II largest subunit (POLR2A) and is recruited to the U1 and U2 snRNAs genes.,sequence caution:Intron retention.,similarity:Belongs to the Integrator subunit 3 family.,subunit:Belongs to the multiprotein complex Integrator, at least composed of INTS1, INTS2, INTS3, INTS4, INTS5, INTS6, INTS7, INTS8, INTS9/RC74, INTS10, CPSF3L/INTS11 and INTS12.,
<b>Background</b>	The protein encoded by this gene can form a complex with human single-strand DNA binding proteins 1 or 2 (hSSB1 and hSSB2) and other proteins to mediate genome stability and the DNA damage response. The encoded protein is also part

Nanjing BYabscience technology Co.,Ltd



of a multiprotein complex that interacts with the C-terminal domain of RNA polymerase II large subunit to help regulate processing of U1 and U2 small nuclear RNAs. [provided by RefSeq, May 2016],

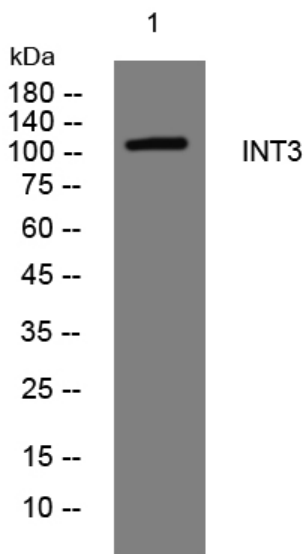
**matters needing attention**

Avoid repeated freezing and thawing!

**Usage suggestions**

This product can be used in immunological reaction related experiments. For more information, please consult technical personnel.

**Products Images**



Western blot analysis of lysates from HeLa cells, primary antibody was diluted at 1:1000, 4° over night