



# LMBRL rabbit pAb

<b>Catalog No</b>	BYab-11301
<b>Isotype</b>	IgG
<b>Reactivity</b>	Human; Mouse
<b>Applications</b>	WB;IHC
<b>Gene Name</b>	LMBR1L KIAA1174 LIMR UNQ458/PRO783
<b>Protein Name</b>	LMBRL
<b>Immunogen</b>	Synthesized peptide derived from human LMBRL AA range: 220-270
<b>Specificity</b>	This antibody detects endogenous levels of LMBRL at Human/Mouse
<b>Formulation</b>	Liquid in PBS containing 50% glycerol, 0.5% BSA and 0.02% sodium azide.
<b>Source</b>	Polyclonal, Rabbit,IgG
<b>Purification</b>	The antibody was affinity-purified from rabbit serum by affinity-chromatography using specific immunogen.
<b>Dilution</b>	WB 1:500-2000;IHC-p 1:50-300
<b>Concentration</b>	1 mg/ml
<b>Purity</b>	≥90%
<b>Storage Stability</b>	-20°C/1 year
<b>Synonyms</b>	
<b>Observed Band</b>	
<b>Cell Pathway</b>	Cell membrane ; Multi-pass membrane protein . Endoplasmic reticulum membrane ; Multi-pass membrane protein .
<b>Tissue Specificity</b>	Expressed in testis, pituitary gland, adrenal gland, trachea, placenta, thymus, cerebellum, stomach, mammary gland, spinal cord. A weaker expression is detected in colon, pancreas, and prostate.
<b>Function</b>	developmental stage:Expressed in fetal kidney and lung.,function:Probable LCN1 receptor. May mediate LCN1 endocytosis.,similarity:Belongs to the LIMR family.,tissue specificity:Expressed in testis, pituitary gland, adrenal gland, trachea, placenta, thymus, cerebellum, stomach, mammary gland, spinal cord. A weaker expression is detected in colon, pancreas, and prostate.,
<b>Background</b>	

Nanjing BYabscience technology Co.,Ltd



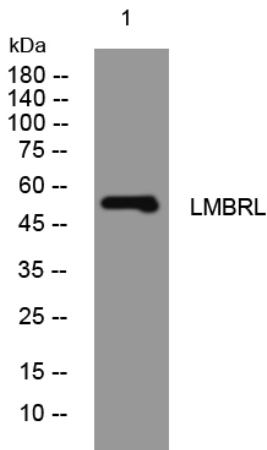
**matters needing attention**

Avoid repeated freezing and thawing!

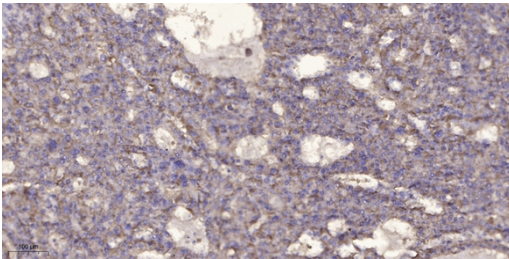
**Usage suggestions**

This product can be used in immunological reaction related experiments. For more information, please consult technical personnel.

## Products Images



Western blot analysis of lysates from A549 cells, primary antibody was diluted at 1:1000, 4° over night



Immunohistochemical analysis of paraffin-embedded human liver cancer. 1, Antibody was diluted at 1:200(4° overnight). 2, Tris-EDTA, pH9.0 was used for antigen retrieval. 3, Secondary antibody was diluted at 1:200(room temperature, 45min).