



## QCR8 rabbit pAb

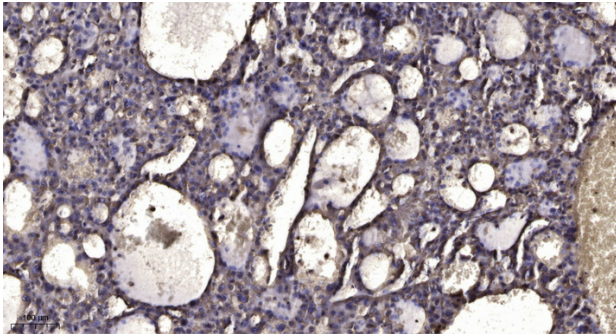
<b>Catalog No</b>	BYab-11284
<b>Isotype</b>	IgG
<b>Reactivity</b>	Human; Mouse;Rat
<b>Applications</b>	IHC;IF
<b>Gene Name</b>	UQCRQ
<b>Protein Name</b>	QCR8
<b>Immunogen</b>	Synthesized peptide derived from human QCR8 AA range: 2-52
<b>Specificity</b>	This antibody detects endogenous levels of QCR8 at Human/Mouse/Rat
<b>Formulation</b>	Liquid in PBS containing 50% glycerol, 0.5% BSA and 0.02% sodium azide.
<b>Source</b>	Polyclonal, Rabbit,IgG
<b>Purification</b>	The antibody was affinity-purified from rabbit serum by affinity-chromatography using specific immunogen.
<b>Dilution</b>	IHC-p 1: 50-200. IF 1:50-200
<b>Concentration</b>	1 mg/ml
<b>Purity</b>	≥90%
<b>Storage Stability</b>	-20°C/1 year
<b>Synonyms</b>	
<b>Observed Band</b>	
<b>Cell Pathway</b>	Mitochondrion inner membrane ; Single-pass membrane protein .
<b>Tissue Specificity</b>	
<b>Function</b>	disease:Defects in UQCRQ are a cause of mitochondrial complex III deficiency (CIII deficiency) [MIM:124000]. Affected individuals display severe psychomotor retardation and extrapyramidal signs. Neurologic features include dystonia, athetoid movements, ataxia, mild axial hypotonia, increased tone, hyperreflexia, and inability to walk unsupported. Serum lactate is mildly elevated and muscle biopsies show a reduction in mitochondrial complex III activity.,function:This is a component of the ubiquinol-cytochrome c reductase complex (complex III or cytochrome b-c1 complex), which is part of the mitochondrial respiratory chain. This subunit, together with cytochrome b, binds to ubiquinone.,similarity:Belongs to the UQCRQ/QCR8 family.,subunit:The bc1 complex contains 11 subunits: 3 respiratory subunits (cytochrome b, cytochrome c1 and Rieske/UQCRFS1), 2 core proteins (UQCRC1/QCR1 and UQCRC2/QC

Nanjing BYabscience technology Co.,Ltd



<b>Background</b>	This gene encodes a ubiquinone-binding protein of low molecular mass. This protein is a small core-associated protein and a subunit of ubiquinol-cytochrome c reductase complex III, which is part of the mitochondrial respiratory chain. [provided by RefSeq, Jul 2008],
<b>matters needing attention</b>	Avoid repeated freezing and thawing!
<b>Usage suggestions</b>	This product can be used in immunological reaction related experiments. For more information, please consult technical personnel.

## Products Images



Immunohistochemical analysis of paraffin-embedded human liver cancer. 1, Antibody was diluted at 1:200(4° overnight). 2, Tris-EDTA,pH9.0 was used for antigen retrieval. 3,Secondary antibody was diluted at 1:200(room temperature, 45min).