



FDFT rabbit pAb

Catalog No	BYab-11280
Isotype	IgG
Reactivity	Human; Mouse;Rat
Applications	WB
Gene Name	FDFT1
Protein Name	FDFT
Immunogen	Synthesized peptide derived from human FDFT AA range: 11-61
Specificity	This antibody detects endogenous levels of FDFT at Human/Mouse/Rat
Formulation	Liquid in PBS containing 50% glycerol, 0.5% BSA and 0.02% sodium azide.
Source	Polyclonal, Rabbit,IgG
Purification	The antibody was affinity-purified from rabbit serum by affinity-chromatography using specific immunogen.
Dilution	WB 1: 500-2000
Concentration	1 mg/ml
Purity	≥90%
Storage Stability	-20°C/1 year
Synonyms	
Observed Band	
Cell Pathway	Endoplasmic reticulum membrane ; Multi-pass membrane protein .
Tissue Specificity	Widely expressed.
Function	catalytic activity:2 farnesyl diphosphate = diphosphate + presqualene diphosphate.,catalytic activity:Presqualene diphosphate + NAD(P)H = squalene + diphosphate + NAD(P)(+).,cofactor:Magnesium.,pathway:Terpene metabolism; lanosterol biosynthesis; lanosterol from farnesyl-PP: step 1/3.,similarity:Belongs to the phytoene/squalene synthetase family.,subunit:Monomer.,
Background	This gene encodes a membrane-associated enzyme located at a branch point in the mevalonate pathway. The encoded protein is the first specific enzyme in cholesterol biosynthesis, catalyzing the dimerization of two molecules of farnesyl diphosphate in a two-step reaction to form squalene. [provided by RefSeq, Jul 2008],

Nanjing BYabscience technology Co.,Ltd



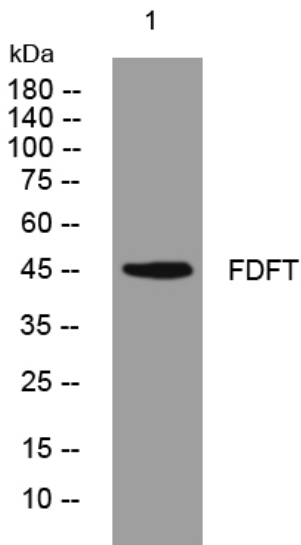
matters needing attention

Avoid repeated freezing and thawing!

Usage suggestions

This product can be used in immunological reaction related experiments. For more information, please consult technical personnel.

Products Images



Western blot analysis of lysates from HEK293 cells, primary antibody was diluted at 1:1000, 4° over night