



# CETN1 rabbit pAb

<b>Catalog No</b>	BYab-11279
<b>Isotype</b>	IgG
<b>Reactivity</b>	Human; Mouse
<b>Applications</b>	WB
<b>Gene Name</b>	CETN1 CEN1 CETN
<b>Protein Name</b>	CETN1
<b>Immunogen</b>	Synthesized peptide derived from human CETN1 AA range: 96-146
<b>Specificity</b>	This antibody detects endogenous levels of CETN1 at Human/Mouse
<b>Formulation</b>	Liquid in PBS containing 50% glycerol, 0.5% BSA and 0.02% sodium azide.
<b>Source</b>	Polyclonal, Rabbit,IgG
<b>Purification</b>	The antibody was affinity-purified from rabbit serum by affinity-chromatography using specific immunogen.
<b>Dilution</b>	WB 1: 500-2000
<b>Concentration</b>	1 mg/ml
<b>Purity</b>	≥90%
<b>Storage Stability</b>	-20°C/1 year
<b>Synonyms</b>	
<b>Observed Band</b>	
<b>Cell Pathway</b>	Cytoplasm, cytoskeleton, microtubule organizing center, centrosome . Cell projection, cilium . Centrosome of interphase and mitotic cells. In the retinal photoreceptor cells, localizes at the connecting cilium, a thin bridge linking the cell body and the light-sensing outer segment (By similarity). .
<b>Tissue Specificity</b>	
<b>Function</b>	function:Plays a fundamental role in microtubule-organizing center structure and function.,miscellaneous:Binds two moles of calcium per mole of protein.,similarity:Belongs to the centrin family.,similarity:Contains 4 EF-hand domains.,subcellular location:Centrosome of interphase and mitotic cells.,subunit:Monomer.,
<b>Background</b>	The protein encoded by this gene plays important roles in the determination of centrosome position and segregation, and in the process of microtubule severing. This protein is localized to the centrosome of interphase cells, and redistributes to the region of the spindle poles during mitosis, reflecting the dynamic behavior of

**Nanjing BYabscience technology Co.,Ltd**



the centrosome during the cell cycle. [provided by RefSeq, Jan 2015],

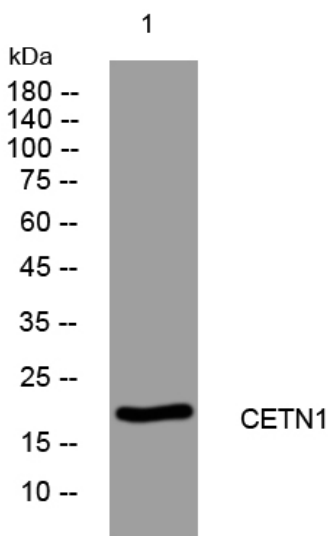
**matters needing attention**

Avoid repeated freezing and thawing!

**Usage suggestions**

This product can be used in immunological reaction related experiments. For more information, please consult technical personnel.

## Products Images



Western blot analysis of lysates from K562 cells, primary antibody was diluted at 1:1000, 4° over night