



NAT10 rabbit pAb

Catalog No	BYab-11246
Isotype	IgG
Reactivity	Human; Mouse
Applications	WB;IHC
Gene Name	NAT10 ALP KIAA1709
Protein Name	NAT10
Immunogen	Synthesized peptide derived from human NAT10 AA range: 738-788
Specificity	This antibody detects endogenous levels of NAT10 at Human/Mouse
Formulation	Liquid in PBS containing 50% glycerol, 0.5% BSA and 0.02% sodium azide.
Source	Polyclonal, Rabbit,IgG
Purification	The antibody was affinity-purified from rabbit serum by affinity-chromatography using specific immunogen.
Dilution	WB 1:500-2000;IHC-p 1:50-300
Concentration	1 mg/ml
Purity	≥90%
Storage Stability	-20°C/1 year
Synonyms	
Observed Band	
Cell Pathway	Nucleus, nucleolus . Midbody . Nucleolar in interphase and redistributes to the perichromosomal layer and to the midbody during telophase. .
Tissue Specificity	
Function	function:Has a histone acetyltransferase in vitro. Involved in TERT transactivation.,similarity:Belongs to the UPF0202 family.,similarity:Contains 1 N-acetyltransferase domain.,
Background	The protein encoded by this gene is an RNA cytidine acetyltransferase involved in histone acetylation, tRNA acetylation, the biosynthesis of 18S rRNA, and the enhancement of nuclear architecture and chromatin organization. [provided by RefSeq, Oct 2016],
matters needing attention	Avoid repeated freezing and thawing!

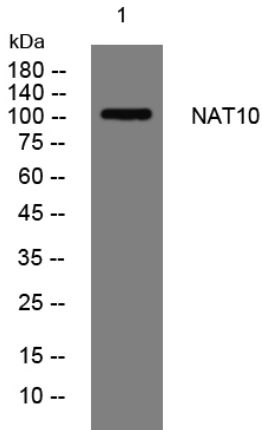
Nanjing BYabscience technology Co.,Ltd



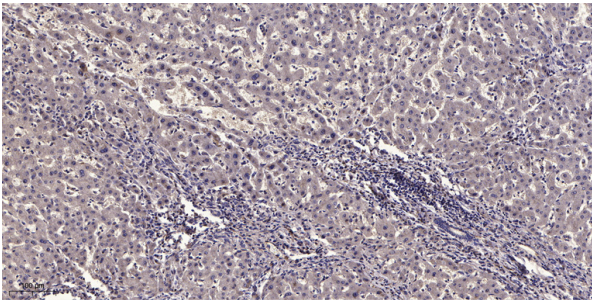
Usage suggestions

This product can be used in immunological reaction related experiments. For more information, please consult technical personnel.

Products Images



Western blot analysis of lysates from THP-1 cells, primary antibody was diluted at 1:1000, 4° over night



Immunohistochemical analysis of paraffin-embedded human liver cancer. 1, Antibody was diluted at 1:200(4° overnight). 2, Tris-EDTA, pH9.0 was used for antigen retrieval. 3, Secondary antibody was diluted at 1:200(room temperature, 45min).