



OCC1 rabbit pAb

Catalog No	BYab-11239
Isotype	IgG
Reactivity	Human; Mouse;Rat
Applications	IHC;IF
Gene Name	OCC1 C12orf75
Protein Name	OCC1
Immunogen	Synthesized peptide derived from human OCC1 AA range: 6-56
Specificity	This antibody detects endogenous levels of OCC1 at Human/Mouse/Rat
Formulation	Liquid in PBS containing 50% glycerol, 0.5% BSA and 0.02% sodium azide.
Source	Polyclonal, Rabbit,IgG
Purification	The antibody was affinity-purified from rabbit serum by affinity-chromatography using specific immunogen.
Dilution	IHC-p 1: 50-200. IF 1:50-200
Concentration	1 mg/ml
Purity	≥90%
Storage Stability	-20°C/1 year
Synonyms	
Observed Band	
Cell Pathway	
Tissue Specificity	High expression in placenta, skeletal muscle, kidney and pancreas tissues. Absent or very faint expression in heart, brain, lung and liver. Expressed during adipogenic differentiation of mesenchymal stem cells (at protein level).
Function	caution:Was reported (PubMed:11890990) to be transcribed but not translated.,sequence caution:Wrong choice of CDS.,similarity:Belongs to the OCC1 family.,tissue specificity:High expression in placenta, skeletal muscle, kidney and pancreas tissues. Absent or very faint expression in heart, brain, lung and liver.,
Background	
matters needing attention	Avoid repeated freezing and thawing!

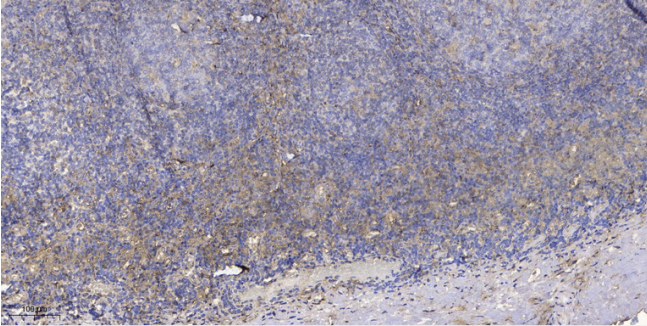
Nanjing BYabscience technology Co.,Ltd



Usage suggestions

This product can be used in immunological reaction related experiments. For more information, please consult technical personnel.

Products Images



Immunohistochemical analysis of paraffin-embedded human tonsil. 1, Antibody was diluted at 1:200(4° overnight). 2, Tris-EDTA,pH9.0 was used for antigen retrieval. 3,Secondary antibody was diluted at 1:200(room temperature, 30min).