



CBY1 rabbit pAb

Catalog No	BYab-11232
Isotype	IgG
Reactivity	Human; Mouse;Rat
Applications	WB
Gene Name	CBY1 ARB1 C22orf2 CBY PGEA1 HRIHFB2025
Protein Name	CBY1
Immunogen	Synthesized peptide derived from human CBY1 AA range: 71-121
Specificity	This antibody detects endogenous levels of CBY1 at Human/Mouse/Rat
Formulation	Liquid in PBS containing 50% glycerol, 0.5% BSA and 0.02% sodium azide.
Source	Polyclonal, Rabbit,IgG
Purification	The antibody was affinity-purified from rabbit serum by affinity-chromatography using specific immunogen.
Dilution	WB 1: 500-2000
Concentration	1 mg/ml
Purity	≥90%
Storage Stability	-20°C/1 year
Synonyms	
Observed Band	
Cell Pathway	Nucleus speckle . Cytoplasm, cytoskeleton, cilium basal body . Cytoplasm, cytoskeleton, microtubule organizing center, centrosome, centriole . Golgi apparatus. Golgi apparatus, trans-Golgi network .
Tissue Specificity	Widely expressed. Expressed at higher levels in heart, skeletal muscle, kidney and placenta. Also found in brain, lung, liver and testis. Significantly down-regulated in thyroid and metastatic uterine tumors.
Function	function:Inhibits the Wnt/Wingless pathway by binding to beta-catenin and inhibiting beta-catenin-mediated transcriptional activation through competition with TCF/LEF transcription factors. Has also been shown to play a role in regulating the intracellular trafficking of polycystin-2/PKD2 and possibly of other intracellular proteins. Promotes adipocyte and cardiomyocyte differentiation.,miscellaneous:Chibby is Japanese for 'small'; the gene was so named for the RNAi phenotype seen in flies.,similarity:Belongs to the chibby family.,subcellular location:Nuclear, in a punctate manner. Also found in the trans-Golgi.,subunit:Homodimer; interacts with polycystin-2/PKD2 and GM130.

Nanjing BYabscience technology Co.,Ltd



Interacts with the C-terminal region of beta-catenin.,tissue specificity:Widely expressed. Expressed at higher levels in heart, skeletal muscle, kidney and placenta. Also found in brain, lung, liver and testis. Signif

Background

Beta-catenin is a transcriptional activator and oncoprotein involved in the development of several cancers. The protein encoded by this gene interacts directly with the C-terminal region of beta-catenin, inhibiting oncogenic beta-catenin-mediated transcriptional activation by competing with transcription factors for binding to beta-catenin. Two transcript variants encoding different isoforms have been found for this gene. [provided by RefSeq, Jul 2008],

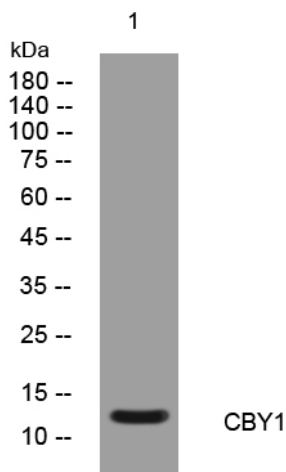
matters needing attention

Avoid repeated freezing and thawing!

Usage suggestions

This product can be used in immunological reaction related experiments. For more information, please consult technical personnel.

Products Images



Western blot analysis of lysates from KB cells, primary antibody was diluted at 1:1000, 4° over night