



TINAL rabbit pAb

Catalog No	BYab-11226
Isotype	IgG
Reactivity	Human; Mouse;Rat
Applications	WB;IHC
Gene Name	TINAGL1 GIS5 LCN7 OLRG2 TINAGL PP6614 PSEC0088 UNQ204/PRO230
Protein Name	TINAL
Immunogen	Synthesized peptide derived from human TINAL AA range: 249-299
Specificity	This antibody detects endogenous levels of TINAL at Human/Mouse/Rat
Formulation	Liquid in PBS containing 50% glycerol, 0.5% BSA and 0.02% sodium azide.
Source	Polyclonal, Rabbit,IgG
Purification	The antibody was affinity-purified from rabbit serum by affinity-chromatography using specific immunogen.
Dilution	WB 1:500-2000;IHC-p 1:50-300
Concentration	1 mg/ml
Purity	≥90%
Storage Stability	-20°C/1 year
Synonyms	
Observed Band	
Cell Pathway	Secreted .
Tissue Specificity	Highly expressed in aorta, heart, placenta, kidney and a colorectal adenocarcinoma cell line. Moderately expressed in skeletal muscle, pancreas, lung, lymph nodes, adrenal gland, bone marrow and thyroid. Weakly expressed in colon, small intestine, ovary, spleen, testis and prostate. Predominantly found in vascular smooth muscle cells, but also in cardiac and skeletal muscle cells as well as kidney.
Function	function:May be implicated in the adrenocortical zonation and in mechanisms for repressing the CYP11B1 gene expression in adrenocortical cells.,PTM:Glycosylated.,similarity:Belongs to the peptidase C1 family.,similarity:Contains 1 SMB (somatomedin-B) domain.,tissue specificity:Highly expressed in aorta, heart, placenta, kidney and a colorectal adenocarcinoma cell line. Moderately expressed in skeletal muscle, pancreas, lung, lymph nodes, adrenal gland, bone marrow and thyroid. Weakly expressed in colon, small intestine, ovary, spleen, testis and prostate. Predominantly found in

Nanjing BYabscience technology Co.,Ltd



vascular smooth muscle cells, but also in cardiac and skeletal muscle cells as well as kidney.,

Background

The protein encoded by this gene is similar in sequence to tubulointerstitial nephritis antigen, a secreted glycoprotein that is recognized by antibodies in some types of immune-related tubulointerstitial nephritis. Three transcript variants encoding different isoforms have been found for this gene. [provided by RefSeq, Feb 2011],

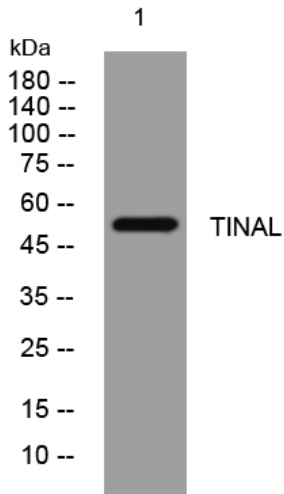
matters needing attention

Avoid repeated freezing and thawing!

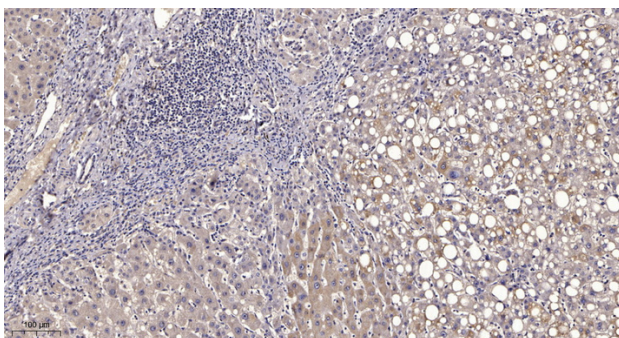
Usage suggestions

This product can be used in immunological reaction related experiments. For more information, please consult technical personnel.

Products Images



Western blot analysis of lysates from A431 cells, primary antibody was diluted at 1:1000, 4° over night



Immunohistochemical analysis of paraffin-embedded human liver cancer. 1, Antibody was diluted at 1:200(4° overnight). 2, Tris-EDTA, pH9.0 was used for antigen retrieval. 3, Secondary antibody was diluted at 1:200(room temperature, 45min).