



COTL1 rabbit pAb

Catalog No	BYab-11219
Isotype	IgG
Reactivity	Human; Mouse;Rat
Applications	WB
Gene Name	COTL1 CLP
Protein Name	COTL1
Immunogen	Synthesized peptide derived from human COTL1 AA range: 29-79
Specificity	This antibody detects endogenous levels of COTL1 at Human/Mouse/Rat
Formulation	Liquid in PBS containing 50% glycerol, 0.5% BSA and 0.02% sodium azide.
Source	Polyclonal, Rabbit,IgG
Purification	The antibody was affinity-purified from rabbit serum by affinity-chromatography using specific immunogen.
Dilution	WB 1: 500-2000
Concentration	1 mg/ml
Purity	≥90%
Storage Stability	-20°C/1 year
Synonyms	
Observed Band	
Cell Pathway	Cytoplasm . Cytoplasm, cytoskeleton . Nucleus .
Tissue Specificity	Widely expressed with highest levels in placenta, lung, kidney and peripheral blood leukocytes and lower levels in brain, liver and pancreas.
Function	function: Binds to F-actin in a calcium-independent manner. Has no direct effect on actin depolymerization.,similarity: Belongs to the actin-binding proteins ADF family. Coactosin subfamily.,similarity: Contains 1 ADF-H domain.,subunit: Interacts with 5-lipoxygenase (5LO) in a calcium-independent manner.,tissue specificity: Widely expressed with highest levels in placenta, lung, kidney and peripheral blood leukocytes and lower levels in brain, liver and pancreas.,
Background	This gene encodes one of the numerous actin-binding proteins which regulate the actin cytoskeleton. This protein binds F-actin, and also interacts with 5-lipoxygenase, which is the first committed enzyme in leukotriene biosynthesis. Although this gene has been reported to map to chromosome 17 in the

Nanjing BYabscience technology Co.,Ltd



Smith-Magenis syndrome region, the best alignments for this gene are to chromosome 16. The Smith-Magenis syndrome region is the site of two related pseudogenes. [provided by RefSeq, Jul 2008],

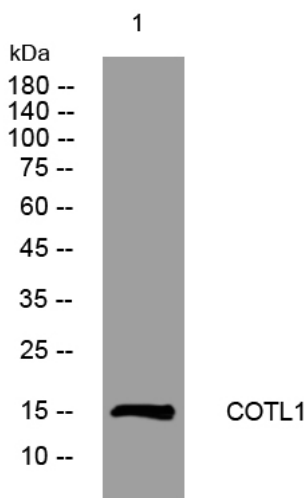
matters needing attention

Avoid repeated freezing and thawing!

Usage suggestions

This product can be used in immunological reaction related experiments. For more information, please consult technical personnel.

Products Images



Western blot analysis of lysates from HCT116 cells, primary antibody was diluted at 1:1000, 4° over night