



PRDM7 rabbit pAb

Catalog No	BYab-11217
Isotype	IgG
Reactivity	Human;Rat;Mouse;
Applications	WB;ELISA;IHC
Gene Name	PRDM7 PFM4
Protein Name	PRDM7
Immunogen	Synthesized peptide derived from human PRDM7 AA range: 28-78
Specificity	This antibody detects endogenous levels of PRDM7 at Human
Formulation	Liquid in PBS containing 50% glycerol, 0.5% BSA and 0.02% sodium azide.
Source	Polyclonal, Rabbit,IgG
Purification	The antibody was affinity-purified from rabbit serum by affinity-chromatography using specific immunogen.
Dilution	WB 1:500-2000;IHC-p 1:50-300; ELISA 2000-20000
Concentration	1 mg/ml
Purity	≥90%
Storage Stability	-20°C/1 year
Synonyms	
Observed Band	
Cell Pathway	Nucleus . Chromosome .
Tissue Specificity	
Function	catalytic activity:S-adenosyl-L-methionine + histone L-lysine = S-adenosyl-L-homocysteine + histone N(6)-methyl-L-lysine.,function:Probable histone methyltransferase.,miscellaneous:The mouse orthologous protein seems not to exist. According to PubMed:17916234, human PRDM7 and PRDM9 genes, a pair of close paralogs corresponding to a single mouse gene Prdm9, were generated by a recent gene duplication event after the divergence of the ancestors of human and mouse.,similarity:Contains 1 KRAB-related domain.,similarity:Contains 1 SET domain.,
Background	This gene encodes a member of a family of proteins that may have roles in transcription and other nuclear processes. The encoded protein contains a KRAB (Kruppel-associated box) domain -A box and a SET (Su(var)3-9,

Nanjing BYabscience technology Co.,Ltd



Enhancer-of-zeste, Trithorax) domain and may function as a histone methyltransferase. [provided by RefSeq, Aug 2013],

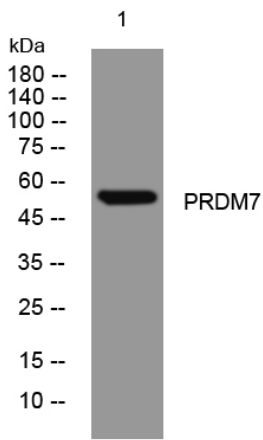
matters needing attention

Avoid repeated freezing and thawing!

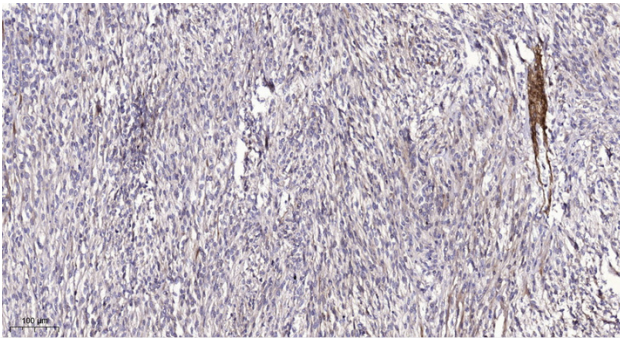
Usage suggestions

This product can be used in immunological reaction related experiments. For more information, please consult technical personnel.

Products Images



Western blot analysis of lysates from HCT116 cells, primary antibody was diluted at 1:1000, 4° over night



Immunohistochemical analysis of paraffin-embedded human Colon cancer. 1, Antibody was diluted at 1:200(4° overnight). 2, Tris-EDTA,pH9.0 was used for antigen retrieval. 3,Secondary antibody was diluted at 1:200(room temperature, 45min).