



# PYDC1 rabbit pAb

<b>Catalog No</b>	BYab-11214
<b>Isotype</b>	IgG
<b>Reactivity</b>	Human;Rat;Mouse;
<b>Applications</b>	IHC;IF
<b>Gene Name</b>	PYDC1 ASC2 ASC1 POP1 PYC1
<b>Protein Name</b>	PYDC1
<b>Immunogen</b>	Synthesized peptide derived from human PYDC1 AA range: 25-75
<b>Specificity</b>	This antibody detects endogenous levels of PYDC1 at Human
<b>Formulation</b>	Liquid in PBS containing 50% glycerol, 0.5% BSA and 0.02% sodium azide.
<b>Source</b>	Polyclonal, Rabbit,IgG
<b>Purification</b>	The antibody was affinity-purified from rabbit serum by affinity-chromatography using specific immunogen.
<b>Dilution</b>	IHC-p 1: 50-200. IF 1:50-200
<b>Concentration</b>	1 mg/ml
<b>Purity</b>	≥90%
<b>Storage Stability</b>	-20°C/1 year
<b>Synonyms</b>	
<b>Observed Band</b>	
<b>Cell Pathway</b>	Cytoplasm . Recruited to specks formed by PYCARD within the cytoplasm. .
<b>Tissue Specificity</b>	Predominantly expressed in monocytes, macrophages and granulocytes.
<b>Function</b>	function:Associates with apoptosis-associated specklike protein containing a CARD domain (ASC) and modulates its ability to collaborate with pyrin and cryopyrin in NF-kappa-B and pro-caspase-1 activation. Suppresses kinase activity of NF-kappa-B inhibitor kinase (IKK) complex, expression of NF-kappa-B inducible genes and inhibits NF-kappa-B activation by cytokines and LPS.,PTM:Phosphorylated.,similarity:Contains 1 DAPIN domain.,subunit:Interacts with PYCARD/ASC.,tissue specificity:Predominantly expressed in monocytes, macrophages and granulocytes.,
<b>Background</b>	

Nanjing BYabscience technology Co.,Ltd



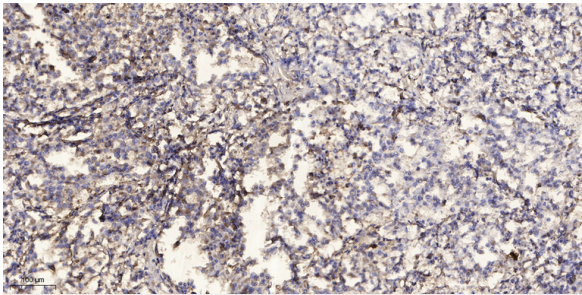
**matters needing attention**

Avoid repeated freezing and thawing!

**Usage suggestions**

This product can be used in immunological reaction related experiments. For more information, please consult technical personnel.

## Products Images



Immunohistochemical analysis of paraffin-embedded human Squamous cell carcinoma of lung. 1, Antibody was diluted at 1:200(4° overnight). 2, Tris-EDTA,pH9.0 was used for antigen retrieval. 3,Secondary antibody was diluted at 1:200(room temperature, 45min).