



# CU024 rabbit pAb

|                                  |  |
|----------------------------------|--|
| <b>Catalog No</b>                | BYab-11203   |
| <b>Isotype</b>                   | IgG  |
| <b>Reactivity</b>                | Human;Rat;Mouse;   |
| <b>Applications</b>              | WB   |
| <b>Gene Name</b>                 | LINC00114 C21orf24 NCRNA00114  |
| <b>Protein Name</b>              | CU024  |
| <b>Immunogen</b>                 | Synthesized peptide derived from human CU024 AA range: 4-54  |
| <b>Specificity</b>               | This antibody detects endogenous levels of CU024 at Human  |
| <b>Formulation</b>               | Liquid in PBS containing 50% glycerol, 0.5% BSA and 0.02% sodium azide.  |
| <b>Source</b>                    | Polyclonal, Rabbit,IgG   |
| <b>Purification</b>              | The antibody was affinity-purified from rabbit serum by affinity-chromatography using specific immunogen.  |
| <b>Dilution</b>                  | WB 1: 500-2000   |
| <b>Concentration</b>             | 1 mg/ml  |
| <b>Purity</b>                    | ≥90%   |
| <b>Storage Stability</b>         | -20°C/1 year   |
| <b>Synonyms</b>                  |  |
| <b>Observed Band</b>             |  |
| <b>Cell Pathway</b>              |  |
| <b>Tissue Specificity</b>        | Expressed in a range of cell lines, including B-cell lymphoma and prostate.  |
| <b>Function</b>                  | caution:Product of a dubious CDS prediction. Probable non-coding RNA. At least 6 alternative mRNA transcripts exist, with consensus splice donor and acceptor sites, but no coding potential nor murine ortholog. This protein sequence corresponds to the so-called isoforms C21orf24-6 and C21orf24-7.,tissue specificity:Expressed in a range of cell lines, including B-cell lymphoma and prostate., |
| <b>Background</b>                |  |
| <b>matters needing attention</b> | Avoid repeated freezing and thawing!   |

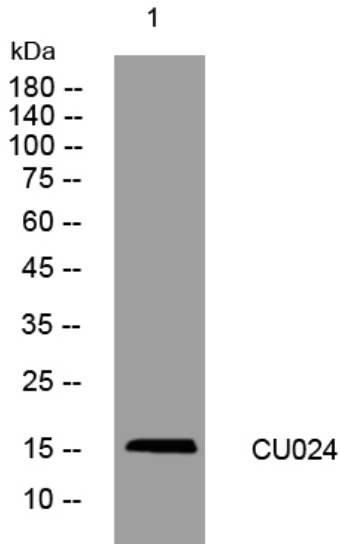
Nanjing BYabscience technology Co.,Ltd



### Usage suggestions

This product can be used in immunological reaction related experiments. For more information, please consult technical personnel.

## Products Images



Western blot analysis of lysates from 293T cells, primary antibody was diluted at 1:1000, 4° over night