



PEF1 rabbit pAb

Catalog No	BYab-11202
Isotype	IgG
Reactivity	Human; Mouse;Rat
Applications	WB;IHC
Gene Name	PEF1 ABP32 UNQ1845/PRO3573
Protein Name	PEF1
Immunogen	Synthesized peptide derived from human PEF1 AA range: 109-159
Specificity	This antibody detects endogenous levels of PEF1 at Human/Mouse/Rat
Formulation	Liquid in PBS containing 50% glycerol, 0.5% BSA and 0.02% sodium azide.
Source	Polyclonal, Rabbit,IgG
Purification	The antibody was affinity-purified from rabbit serum by affinity-chromatography using specific immunogen.
Dilution	WB 1:500-2000;IHC-p 1:50-300
Concentration	1 mg/ml
Purity	≥90%
Storage Stability	-20°C/1 year
Synonyms	
Observed Band	
Cell Pathway	Cytoplasm . Endoplasmic reticulum . Membrane ; Peripheral membrane protein . Cytoplasmic vesicle, COPII-coated vesicle membrane ; Peripheral membrane protein . Membrane-associated in the presence of Ca(2+). (PubMed:11278427). Localizes to endoplasmic reticulum exit site (ERES) (By similarity). .
Tissue Specificity	
Function	similarity:Contains 5 EF-hand domains.,subcellular location:Membrane-associated in the presence of Ca(2+).,subunit:Heterodimer; heterodimerizes with PDCD6/ALG2. Dissociates from PDCD6/ALG2 in presence of Ca(2+).,
Background	This gene encodes a calcium-binding protein belonging to the penta-EF-hand protein family. The encoded protein has been shown to form a heterodimer with the programmed cell death 6 gene product and may modulate its function in Ca(2+) signaling. Alternative splicing results in multiple transcript variants and a pseudogene has been identified on chromosome 1.[provided by RefSeq, May

Nanjing BYabscience technology Co.,Ltd



2010],

matters needing attention

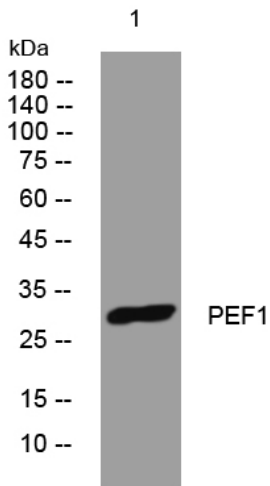
Avoid repeated freezing and thawing!

Usage suggestions

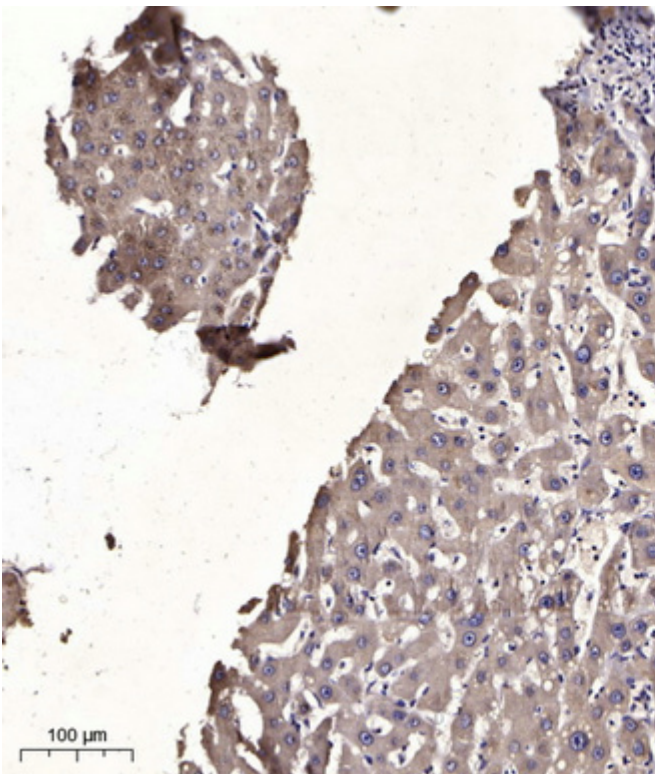
This product can be used in immunological reaction related experiments. For more information, please consult technical personnel.



Products Images



Western blot analysis of lysates from HeLa cells, primary antibody was diluted at 1:1000, 4° over night



Immunohistochemical analysis of paraffin-embedded human liver cancer. 1, Antibody was diluted at 1:200(4° overnight). 2, Tris-EDTA, pH9.0 was used for antigen retrieval. 3, Secondary antibody was diluted at 1:200(room temperature, 45min).