



GLDN rabbit pAb

| | |
|---------------------------|--|
| Catalog No | BYab-11180 |
| Isotype | IgG |
| Reactivity | Human; Mouse;Rat |
| Applications | WB |
| Gene Name | GLDN COLM UNQ9339/PRO34011 |
| Protein Name | GLDN |
| Immunogen | Synthesized peptide derived from human GLDN AA range: 461-511 |
| Specificity | This antibody detects endogenous levels of GLDN at Human/Mouse/Rat |
| Formulation | Liquid in PBS containing 50% glycerol, 0.5% BSA and 0.02% sodium azide. |
| Source | Polyclonal, Rabbit,IgG |
| Purification | The antibody was affinity-purified from rabbit serum by affinity-chromatography using specific immunogen. |
| Dilution | WB 1: 500-2000 |
| Concentration | 1 mg/ml |
| Purity | ≥90% |
| Storage Stability | -20°C/1 year |
| Synonyms | |
| Observed Band | |
| Cell Pathway | Cell membrane ; Single-pass type II membrane protein . Cell projection, axon . Detected at the nodes of Ranvier. Detected at immature heminodes. .; [Gliomedin shedded ectodomain]: Secreted . Secreted, extracellular space, extracellular matrix . Proteolytic processing gives rise to a soluble extracellular domain that is secreted. The gliomedin shedded ectodomain localizes to the nodes of Ranvier. . |
| Tissue Specificity | Specifically expressed in spinal cord, brain, placenta and sciatic nerve. More abundant in peripheral than central nervous system. |
| Function | domain:The olfactomedin-like domain mediates NFASC/neurofascin and NRCAM binding.,function:Plays a role in the formation of the nodes of Ranvier along myelinated axons. Probable NRCAM and NFASC/neurofascin ligand which may provide a glial positional clue required for the proper molecular assembly of the nodes of Ranvier.,similarity:Contains 1 olfactomedin-like domain.,similarity:Contains 2 collagen-like domains.,subcellular location:Localizes to the nodes of Ranvier.,subunit:Interacts with NFASC/neurofascin and NRCAM.,tissue specificity:Specifically expressed in |

Nanjing BYabscience technology Co.,Ltd



spinal cord, brain, placenta and sciatic nerve. More abundant in peripheral than central nervous system.,

Background

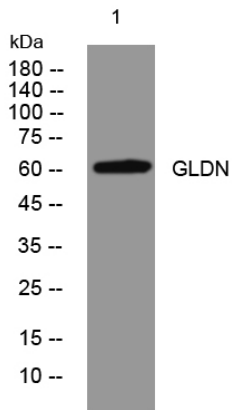
matters needing attention

Avoid repeated freezing and thawing!

Usage suggestions

This product can be used in immunological reaction related experiments. For more information, please consult technical personnel.

Products Images



Western blot analysis of lysates from KB cells, primary antibody was diluted at 1:1000, 4° over night