



# SPAC7 rabbit pAb

<b>Catalog No</b>	BYab-11175
<b>Isotype</b>	IgG
<b>Reactivity</b>	Human; Mouse
<b>Applications</b>	WB;ELISA;IHC
<b>Gene Name</b>	SPACA7 C13orf28
<b>Protein Name</b>	SPAC7
<b>Immunogen</b>	Synthesized peptide derived from human SPAC7 AA range: 115-165
<b>Specificity</b>	This antibody detects endogenous levels of SPAC7 at Human/Mouse
<b>Formulation</b>	Liquid in PBS containing 50% glycerol, 0.5% BSA and 0.02% sodium azide.
<b>Source</b>	Polyclonal, Rabbit,IgG
<b>Purification</b>	The antibody was affinity-purified from rabbit serum by affinity-chromatography using specific immunogen.
<b>Dilution</b>	WB 1:500-2000;IHC-p 1:50-300; ELISA 2000-20000
<b>Concentration</b>	1 mg/ml
<b>Purity</b>	≥90%
<b>Storage Stability</b>	-20°C/1 year
<b>Synonyms</b>	
<b>Observed Band</b>	
<b>Cell Pathway</b>	Secreted . Cytoplasmic vesicle, secretory vesicle, acrosome . Cytoplasmic vesicle, secretory vesicle, acrosome lumen . Localized in perinuclear pro-acrosomal granules in round spermatides. Localized between the inner and outer acrosomal membranes (matrix or lumen) in spermatozoa. Secreted during acrosome exocytosis. .
<b>Tissue Specificity</b>	Expressed in spermatozoa (at protein level) (PubMed:22495889).
<b>Function</b>	
<b>Background</b>	
<b>matters needing attention</b>	Avoid repeated freezing and thawing!

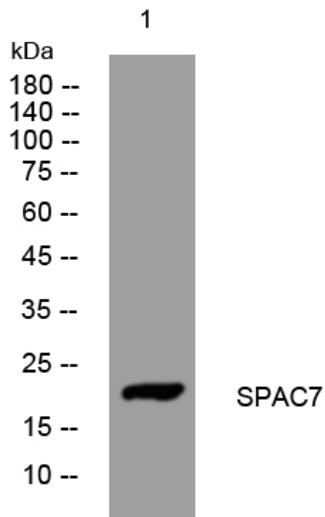
Nanjing BYabscience technology Co.,Ltd



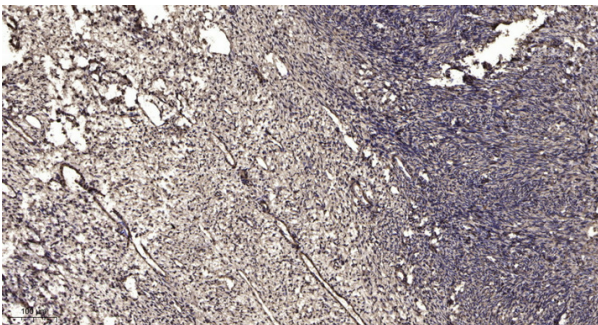
### Usage suggestions

This product can be used in immunological reaction related experiments. For more information, please consult technical personnel.

## Products Images



Western blot analysis of lysates from VEC cells, primary antibody was diluted at 1:1000, 4° over night



Immunohistochemical analysis of paraffin-embedded human oophoroma. 1, Antibody was diluted at 1:200(4° overnight). 2, Tris-EDTA, pH9.0 was used for antigen retrieval. 3, Secondary antibody was diluted at 1:200(room temperature, 45min).