



PURA1 rabbit pAb

Catalog No	BYab-11171
Isotype	IgG
Reactivity	Human; Mouse
Applications	WB;IHC
Gene Name	ADSSL1 ADSS1
Protein Name	PURA1
Immunogen	Synthesized peptide derived from human PURA1 AA range: 14-64
Specificity	This antibody detects endogenous levels of PURA1 at Human/Mouse
Formulation	Liquid in PBS containing 50% glycerol, 0.5% BSA and 0.02% sodium azide.
Source	Polyclonal, Rabbit,IgG
Purification	The antibody was affinity-purified from rabbit serum by affinity-chromatography using specific immunogen.
Dilution	WB 1:500-2000;IHC-p 1:50-300
Concentration	1 mg/ml
Purity	≥90%
Storage Stability	-20°C/1 year
Synonyms	
Observed Band	
Cell Pathway	Cytoplasm .
Tissue Specificity	Predominantly expressed in skeletal muscle and heart, as well as in several hematopoietic cell lines and solid tumors.
Function	catalytic activity:GTP + IMP + L-aspartate = GDP + phosphate + N(6)-(1,2-dicarboxyethyl)-AMP.,cofactor:Binds 1 magnesium ion per subunit.,function:Plays an important role in the de novo pathway of purine nucleotide biosynthesis.,pathway:Purine metabolism; AMP biosynthesis via de novo pathway; AMP from IMP: step 1/2.,similarity:Belongs to the adenylosuccinate synthetase family.,subunit:Homodimer.,tissue specificity:Predominantly expressed in skeletal muscle and heart, as well as in several hematopoietic cell lines and solid tumors.,
Background	This gene encodes a member of the adenylosuccinate synthase family of proteins. The encoded muscle-specific enzyme plays a role in the purine nucleotide cycle by catalyzing the first step in the conversion of inosine

Nanjing BYabscience technology Co.,Ltd



monophosphate (IMP) to adenosine monophosphate (AMP). Mutations in this gene may cause adolescent onset distal myopathy. Alternative splicing results in multiple transcript variants. [provided by RefSeq, Feb 2016],

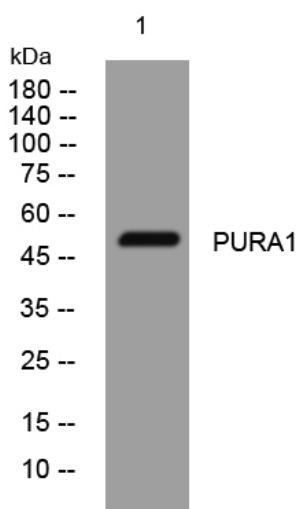
matters needing attention

Avoid repeated freezing and thawing!

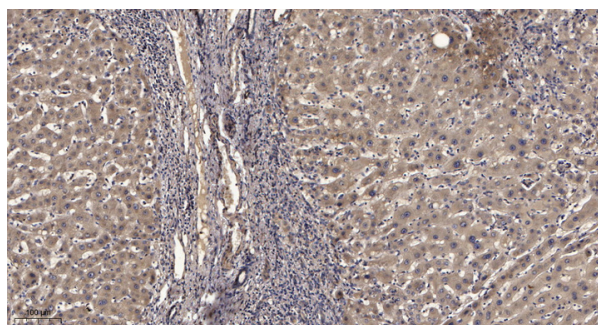
Usage suggestions

This product can be used in immunological reaction related experiments. For more information, please consult technical personnel.

Products Images



Western blot analysis of lysates from VEC cells, primary antibody was diluted at 1:1000, 4° over night



Immunohistochemical analysis of paraffin-embedded human liver cancer. 1, Antibody was diluted at 1:200(4° overnight). 2, Tris-EDTA, pH9.0 was used for antigen retrieval. 3, Secondary antibody was diluted at 1:200(room temperature, 45min).