



OR2J2 rabbit pAb

Catalog No	BYab-11151
Isotype	IgG
Reactivity	Human;Rat;Mouse;
Applications	WB
Gene Name	OR2J2
Protein Name	OR2J2
Immunogen	Synthesized peptide derived from human OR2J2 AA range: 44-94
Specificity	This antibody detects endogenous levels of OR2J2 at Human
Formulation	Liquid in PBS containing 50% glycerol, 0.5% BSA and 0.02% sodium azide.
Source	Polyclonal, Rabbit,IgG
Purification	The antibody was affinity-purified from rabbit serum by affinity-chromatography using specific immunogen.
Dilution	WB 1: 500-2000
Concentration	1 mg/ml
Purity	≥90%
Storage Stability	-20°C/1 year
Synonyms	
Observed Band	
Cell Pathway	Cell membrane; Multi-pass membrane protein.
Tissue Specificity	
Function	function:Odorant receptor .,polymorphism:Three OR2J2 alleles are known: 6M1-6*01, 6M1-6*02 and 6M1-6*03. The sequence shown is that of allele 6M1-6*01.,similarity:Belongs to the G-protein coupled receptor 1 family.,
Background	olfactory receptor family 2 subfamily J member 2(OR2J2) Homo sapiens Olfactory receptors interact with odorant molecules in the nose, to initiate a neuronal response that triggers the perception of a smell. The olfactory receptor proteins are members of a large family of G-protein-coupled receptors (GPCR) arising from single coding-exon genes. Olfactory receptors share a 7-transmembrane domain structure with many neurotransmitter and hormone receptors and are responsible for the recognition and G protein-mediated transduction of odorant signals. The olfactory receptor gene family is the largest in

Nanjing BYabscience technology Co.,Ltd



the genome. The nomenclature assigned to the olfactory receptor genes and proteins for this organism is independent of other organisms. [provided by RefSeq, Jul 2008],

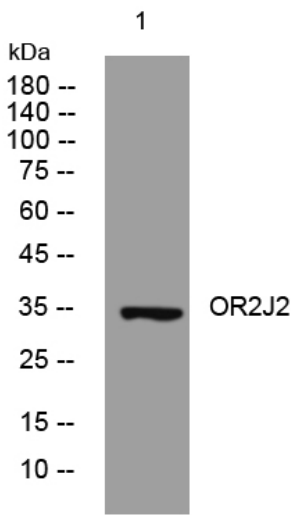
matters needing attention

Avoid repeated freezing and thawing!

Usage suggestions

This product can be used in immunological reaction related experiments. For more information, please consult technical personnel.

Products Images



Western blot analysis of lysates from HCT116 cells, primary antibody was diluted at 1:1000, 4° over night