



# NUDT6 rabbit pAb

<b>Catalog No</b>	BYab-11150
<b>Isotype</b>	IgG
<b>Reactivity</b>	Human; Mouse;Rat
<b>Applications</b>	WB
<b>Gene Name</b>	NUDT6 FGF2AS
<b>Protein Name</b>	NUDT6
<b>Immunogen</b>	Synthesized peptide derived from human NUDT6 AA range: 225-275
<b>Specificity</b>	This antibody detects endogenous levels of NUDT6 at Human/Mouse/Rat
<b>Formulation</b>	Liquid in PBS containing 50% glycerol, 0.5% BSA and 0.02% sodium azide.
<b>Source</b>	Polyclonal, Rabbit,IgG
<b>Purification</b>	The antibody was affinity-purified from rabbit serum by affinity-chromatography using specific immunogen.
<b>Dilution</b>	WB 1: 500-2000
<b>Concentration</b>	1 mg/ml
<b>Purity</b>	≥90%
<b>Storage Stability</b>	-20°C/1 year
<b>Synonyms</b>	
<b>Observed Band</b>	
<b>Cell Pathway</b>	Cytoplasm. Nucleus. Mitochondrion. Subcellular location may vary between isoforms.
<b>Tissue Specificity</b>	Detected in liver, kidney and esophagus (at protein level). Ubiquitous.
<b>Function</b>	miscellaneous:This protein is coded from a FGF2 (BFGF) gene antisense transcript.,similarity:Belongs to the Nudix hydrolase family.,
<b>Background</b>	This gene overlaps and lies on the opposite strand from FGF2 gene, and is thought to be the FGF2 antisense gene. The two genes are independently transcribed, and their expression shows an inverse relationship, suggesting that this antisense transcript may regulate FGF2 expression. This gene has also been shown to have hormone-regulatory and antiproliferative actions in the pituitary that are independent of FGF2 expression. Alternatively spliced transcript variants encoding different isoforms have been found for this gene. [provided by RefSeq, Oct 2011],

Nanjing BYabscience technology Co.,Ltd



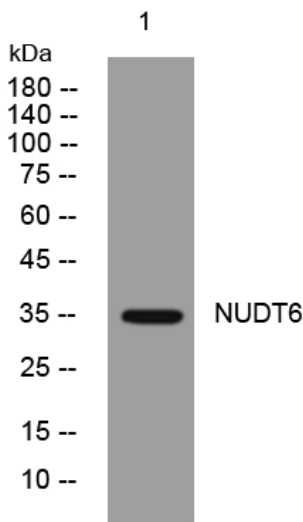
**matters needing attention**

Avoid repeated freezing and thawing!

**Usage suggestions**

This product can be used in immunological reaction related experiments. For more information, please consult technical personnel.

## Products Images



Western blot analysis of lysates from KB cells, primary antibody was diluted at 1:1000, 4° over night