



PA2GE rabbit pAb

Catalog No	BYab-11134
Isotype	IgG
Reactivity	Human; Mouse
Applications	WB
Gene Name	PLA2G2E
Protein Name	PA2GE
Immunogen	Synthesized peptide derived from human PA2GE AA range: 58-108
Specificity	This antibody detects endogenous levels of PA2GE at Human/Mouse
Formulation	Liquid in PBS containing 50% glycerol, 0.5% BSA and 0.02% sodium azide.
Source	Polyclonal, Rabbit,IgG
Purification	The antibody was affinity-purified from rabbit serum by affinity-chromatography using specific immunogen.
Dilution	WB 1: 500-2000
Concentration	1 mg/ml
Purity	≥90%
Storage Stability	-20°C/1 year
Synonyms	
Observed Band	
Cell Pathway	Secreted . Cytoplasm . Through binding to heparan sulfate proteoglycan, may be localized to cytoplasmic compartments enriched in anionic phospholipids. .
Tissue Specificity	Restricted to the brain, heart, lung, and placenta.
Function	catalytic activity:Phosphatidylcholine + H(2)O = 1-acylglycerophosphocholine + a carboxylate.,cofactor:Binds 1 calcium ion per subunit.,function:PA2 catalyzes the calcium-dependent hydrolysis of the 2-acyl groups in 3-sn-phosphoglycerides. Has a preference for arachidonic-containing phospholipids.,similarity:Belongs to the phospholipase A2 family.,tissue specificity:Restricted to the brain, heart, lung, and placenta.,
Background	
matters needing attention	Avoid repeated freezing and thawing!

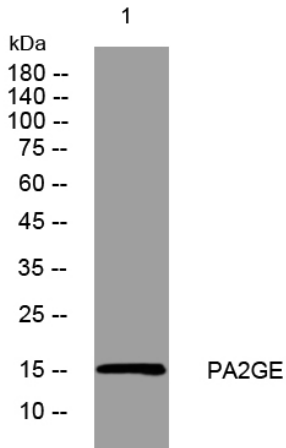
Nanjing BYabscience technology Co.,Ltd



Usage suggestions

This product can be used in immunological reaction related experiments. For more information, please consult technical personnel.

Products Images



Western blot analysis of lysates from SH-SY5Y cells, primary antibody was diluted at 1:1000, 4° over night