



RNAS9 rabbit pAb

Catalog No	BYab-11130
Isotype	IgG
Reactivity	Human; Mouse
Applications	WB; ELISA;IHC
Gene Name	RNASE9
Protein Name	RNAS9
Immunogen	Synthesized peptide derived from human RNAS9 AA range: 86-136
Specificity	This antibody detects endogenous levels of RNAS9 at Human/Mouse
Formulation	Liquid in PBS containing 50% glycerol, 0.5% BSA and 0.02% sodium azide.
Source	Polyclonal, Rabbit,IgG
Purification	The antibody was affinity-purified from rabbit serum by affinity-chromatography using specific immunogen.
Dilution	WB 1:500-2000;IHC-p 1:50-300; ELISA 2000-20000
Concentration	1 mg/ml
Purity	≥90%
Storage Stability	-20°C/1 year
Synonyms	
Observed Band	
Cell Pathway	Secreted .
Tissue Specificity	At the mRNA level, widely expressed (PubMed:18992174). At protein level, restricted to epididymis (PubMed:19137000). Expressed in spermatozoa (sperm head and neck), with higher levels on ejaculated and epididymal sperm than on testicular sperm (at protein level). Expressed in the epithelial cells of the epididymal tubule (at protein level). Not detected in muscle.
Function	similarity:Belongs to the pancreatic ribonuclease family.,
Background	
matters needing attention	Avoid repeated freezing and thawing!

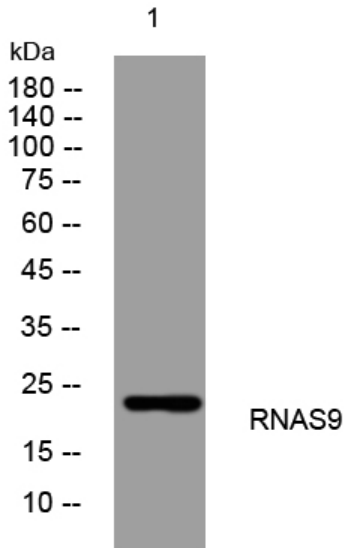
Nanjing BYabscience technology Co.,Ltd



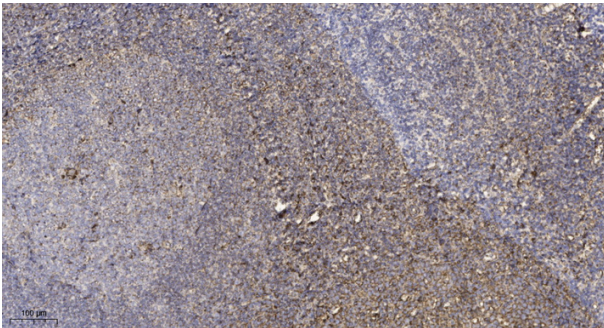
Usage suggestions

This product can be used in immunological reaction related experiments. For more information, please consult technical personnel.

Products Images



Western blot analysis of lysates from HpeG2 cells, primary antibody was diluted at 1:1000, 4° over night



Immunohistochemical analysis of paraffin-embedded human tonsil. 1, Antibody was diluted at 1:200(4° overnight). 2, Tris-EDTA,pH9.0 was used for antigen retrieval. 3,Secondary antibody was diluted at 1:200(room temperature, 45min).