



# HPLN3 rabbit pAb

<b>Catalog No</b>	BYab-11104
<b>Isotype</b>	IgG
<b>Reactivity</b>	Human; Mouse
<b>Applications</b>	WB
<b>Gene Name</b>	HAPLN3 EXLD1 UNQ238/PRO271
<b>Protein Name</b>	HPLN3
<b>Immunogen</b>	Synthesized peptide derived from human HPLN3 AA range: 87-137
<b>Specificity</b>	This antibody detects endogenous levels of HPLN3 at Human/Mouse
<b>Formulation</b>	Liquid in PBS containing 50% glycerol, 0.5% BSA and 0.02% sodium azide.
<b>Source</b>	Polyclonal, Rabbit,IgG
<b>Purification</b>	The antibody was affinity-purified from rabbit serum by affinity-chromatography using specific immunogen.
<b>Dilution</b>	WB 1: 500-2000
<b>Concentration</b>	1 mg/ml
<b>Purity</b>	≥90%
<b>Storage Stability</b>	-20°C/1 year
<b>Synonyms</b>	
<b>Observed Band</b>	
<b>Cell Pathway</b>	Secreted, extracellular space, extracellular matrix .
<b>Tissue Specificity</b>	Widely expressed with highest levels in spleen and placenta.
<b>Function</b>	function:May function in hyaluronic acid binding.,similarity:Belongs to the HAPLN family.,similarity:Contains 1 Ig-like V-type (immunoglobulin-like) domain.,similarity:Contains 2 Link domains.,tissue specificity:Widely expressed with highest levels in spleen and placenta.,
<b>Background</b>	This gene belongs to the hyaluronan and proteoglycan binding link protein gene family. The protein encoded by this gene may function in hyaluronic acid binding and cell adhesion. [provided by RefSeq, Jul 2008],
<b>matters needing attention</b>	Avoid repeated freezing and thawing!

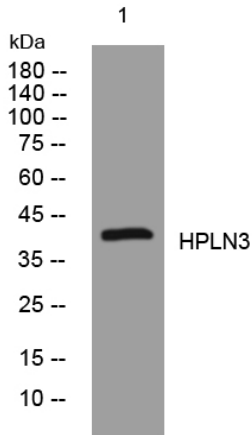
Nanjing BYabscience technology Co.,Ltd



### Usage suggestions

This product can be used in immunological reaction related experiments. For more information, please consult technical personnel.

## Products Images



Western blot analysis of lysates from 293T cells, primary antibody was diluted at 1:1000, 4° over night