



SALL2 rabbit pAb

Catalog No	BYab-11098
Isotype	IgG
Reactivity	Human; Mouse
Applications	WB
Gene Name	SALL2 KIAA0360 SAL2 ZNF795
Protein Name	SALL2
Immunogen	Synthesized peptide derived from human SALL2 AA range: 956-1006
Specificity	This antibody detects endogenous levels of SALL2 at Human/Mouse
Formulation	Liquid in PBS containing 50% glycerol, 0.5% BSA and 0.02% sodium azide.
Source	Polyclonal, Rabbit,IgG
Purification	The antibody was affinity-purified from rabbit serum by affinity-chromatography using specific immunogen.
Dilution	WB 1: 500-2000
Concentration	1 mg/ml
Purity	≥90%
Storage Stability	-20°C/1 year
Synonyms	
Observed Band	
Cell Pathway	Nucleus .
Tissue Specificity	Highest levels in adult brain (in different areas). Lower levels in heart; very low levels in kidney and pancreas. Expressed throughout the retina and lens vesicle as well as the periocular mesenchyme.
Function	developmental stage:In fetal brain exclusively in pontine nuclei.,function:Probable transcription factor.,similarity:Belongs to the sal C2H2-type zinc-finger protein family.,similarity:Contains 7 C2H2-type zinc fingers.,tissue specificity:Highest levels in adult brain (in different areas). Lower levels in heart; very low levels in kidney and pancreas.,
Background	This gene encodes a protein containing multiple zinc finger domains. The encoded protein functions in optical fissure closure during development of the eye in the embryo. Mutations in this gene are associated with ocular coloboma. [provided by RefSeq, Jul 2016],

Nanjing BYabscience technology Co.,Ltd



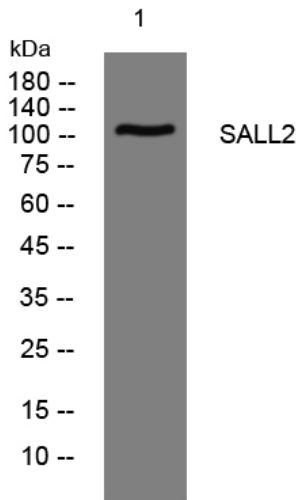
matters needing attention

Avoid repeated freezing and thawing!

Usage suggestions

This product can be used in immunological reaction related experiments. For more information, please consult technical personnel.

Products Images



Western blot analysis of lysates from HpeG2 cells, primary antibody was diluted at 1:1000, 4° over night