



## MPPB rabbit pAb

<b>Catalog No</b>	BYab-11094
<b>Isotype</b>	IgG
<b>Reactivity</b>	Human; Mouse;Rat
<b>Applications</b>	WB;IHC
<b>Gene Name</b>	PMPCB MPPB
<b>Protein Name</b>	MPPB
<b>Immunogen</b>	Synthesized peptide derived from human MPPB AA range: 92-142
<b>Specificity</b>	This antibody detects endogenous levels of MPPB at Human/Mouse/Rat
<b>Formulation</b>	Liquid in PBS containing 50% glycerol, 0.5% BSA and 0.02% sodium azide.
<b>Source</b>	Polyclonal, Rabbit,IgG
<b>Purification</b>	The antibody was affinity-purified from rabbit serum by affinity-chromatography using specific immunogen.
<b>Dilution</b>	WB 1:500-2000;IHC-p 1:50-300
<b>Concentration</b>	1 mg/ml
<b>Purity</b>	≥90%
<b>Storage Stability</b>	-20°C/1 year
<b>Synonyms</b>	
<b>Observed Band</b>	
<b>Cell Pathway</b>	Mitochondrion matrix .
<b>Tissue Specificity</b>	
<b>Function</b>	catalytic activity:Release of N-terminal transit peptides from precursor proteins imported into the mitochondrion, typically with Arg in position P2.,cofactor:Binds 1 zinc ion per subunit.,function:Cleaves presequences (transit peptides) from mitochondrial protein precursors.,similarity:Belongs to the peptidase M16 family.,subunit:Heterodimer of alpha and beta subunits.,
<b>Background</b>	This gene is a member of the peptidase M16 family and encodes a protein with a zinc-binding motif. This protein is located in the mitochondrial matrix and catalyzes the cleavage of the leader peptides of precursor proteins newly imported into the mitochondria, though it only functions as part of a heterodimeric complex. [provided by RefSeq, Jul 2008],

Nanjing BYabscience technology Co.,Ltd



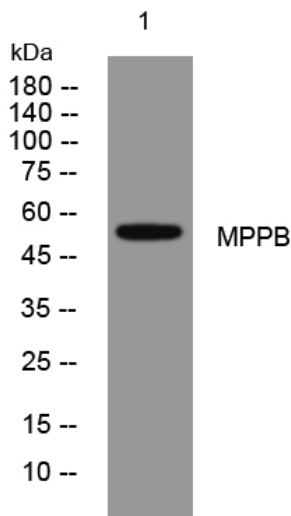
**matters needing attention**

Avoid repeated freezing and thawing!

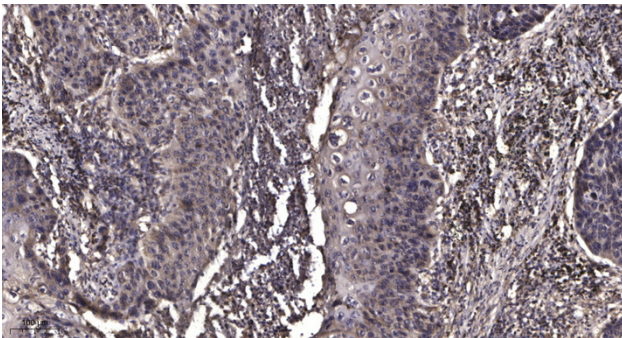
**Usage suggestions**

This product can be used in immunological reaction related experiments. For more information, please consult technical personnel.

**Products Images**



Western blot analysis of lysates from 293T cells, primary antibody was diluted at 1:1000, 4° over night



Immunohistochemical analysis of paraffin-embedded human Squamous cell carcinoma of lung. 1, Antibody was diluted at 1:200(4° overnight). 2, Tris-EDTA,pH9.0 was used for antigen retrieval. 3,Secondary antibody was diluted at 1:200(room temperature, 45min).