



AMOL2 rabbit pAb

Catalog No	BYab-11085
Isotype	IgG
Reactivity	Human; Mouse;Rat
Applications	WB
Gene Name	AMOTL2 KIAA0989
Protein Name	AMOL2
Immunogen	Synthesized peptide derived from human AMOL2 AA range: 201-251
Specificity	This antibody detects endogenous levels of AMOL2 at Human/Mouse/Rat
Formulation	Liquid in PBS containing 50% glycerol, 0.5% BSA and 0.02% sodium azide.
Source	Polyclonal, Rabbit,IgG
Purification	The antibody was affinity-purified from rabbit serum by affinity-chromatography using specific immunogen.
Dilution	WB 1: 500-2000
Concentration	1 mg/ml
Purity	≥90%
Storage Stability	-20°C/1 year
Synonyms	
Observed Band	
Cell Pathway	Recycling endosome .
Tissue Specificity	
Function	similarity:Belongs to the angiotenin family.,
Background	Angiotenin is a protein that binds angiotenin, a circulating inhibitor of the formation of new blood vessels (angiogenesis). Angiotenin mediates angiotenin inhibition of endothelial cell migration and tube formation in vitro. The protein encoded by this gene is related to angiotenin and is a member of the motin protein family. Alternative splicing results in multiple transcript variants of this gene. [provided by RefSeq, Jul 2013],
matters needing attention	Avoid repeated freezing and thawing!

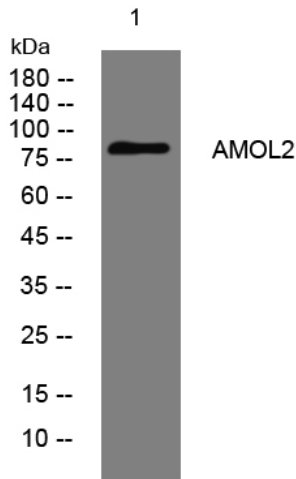
Nanjing BYabscience technology Co.,Ltd



Usage suggestions

This product can be used in immunological reaction related experiments. For more information, please consult technical personnel.

Products Images



Western blot analysis of lysates from KB cells, primary antibody was diluted at 1:1000, 4° over night