



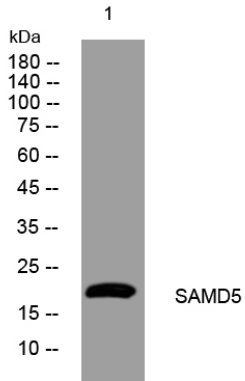
SAMD5 rabbit pAb

Catalog No	BYab-11073
Isotype	IgG
Reactivity	Human; Mouse
Applications	WB
Gene Name	SAMD5 SAMDC1
Protein Name	SAMD5
Immunogen	Synthesized peptide derived from human SAMD5 AA range: 66-116
Specificity	This antibody detects endogenous levels of SAMD5 at Human/Mouse
Formulation	Liquid in PBS containing 50% glycerol, 0.5% BSA and 0.02% sodium azide.
Source	Polyclonal, Rabbit,IgG
Purification	The antibody was affinity-purified from rabbit serum by affinity-chromatography using specific immunogen.
Dilution	WB 1: 500-2000
Concentration	1 mg/ml
Purity	≥90%
Storage Stability	-20°C/1 year
Synonyms	
Observed Band	
Cell Pathway	Cytoplasm .
Tissue Specificity	Detected in biliary epithelial cells on bile ducts at the hepatic hilum (at protein level).
Function	similarity:Contains 1 SAM (sterile alpha motif) domain.,
Background	
matters needing attention	Avoid repeated freezing and thawing!
Usage suggestions	This product can be used in immunological reaction related experiments. For more information, please consult technical personnel.

Nanjing BYabscience technology Co.,Ltd



Products Images



Western blot analysis of lysates from VEC cells,
primary antibody was diluted at 1:1000, 4° over night