



# HMBX1 rabbit pAb

<b>Catalog No</b>	BYab-11071
<b>Isotype</b>	IgG
<b>Reactivity</b>	Human; Mouse
<b>Applications</b>	WB
<b>Gene Name</b>	HMBOX1
<b>Protein Name</b>	HMBX1
<b>Immunogen</b>	Synthesized peptide derived from human HMBX1 AA range: 169-219
<b>Specificity</b>	This antibody detects endogenous levels of HMBX1 at Human/Mouse
<b>Formulation</b>	Liquid in PBS containing 50% glycerol, 0.5% BSA and 0.02% sodium azide.
<b>Source</b>	Polyclonal, Rabbit,IgG
<b>Purification</b>	The antibody was affinity-purified from rabbit serum by affinity-chromatography using specific immunogen.
<b>Dilution</b>	WB 1: 500-2000
<b>Concentration</b>	1 mg/ml
<b>Purity</b>	≥90%
<b>Storage Stability</b>	-20°C/1 year
<b>Synonyms</b>	
<b>Observed Band</b>	
<b>Cell Pathway</b>	Nucleus . Cytoplasm . Chromosome, telomere . Nucleus, Cajal body . Nucleus, PML body . Predominantly detected in cytoplasm (PubMed:16825764, PubMed:19728927). Localizes in a dynamic manner to actively processed telomeres (PubMed:23685356). Localizes to the periphery of Cajal bodies (PubMed:23685356). Associates with PML nuclear bodies in telomerase-negative cells (PubMed:23813958). .; [Isoform 5]: Nucleus . Cytoplasm .
<b>Tissue Specificity</b>	Ubiquitous. Detected in pancreas, brain, spleen, placenta, prostate, thymus, liver, heart, bone marrow, skeletal muscle, stomach, uterus, testis, kidney, ovary, colon, lung, cardiac muscle and thyroid gland.
<b>Function</b>	function:Putative transcription factor .,similarity:Contains 1 homeobox DNA-binding domain.,
<b>Background</b>	

Nanjing BYabscience technology Co.,Ltd



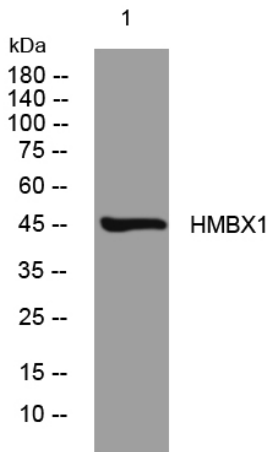
**matters needing attention**

Avoid repeated freezing and thawing!

**Usage suggestions**

This product can be used in immunological reaction related experiments. For more information, please consult technical personnel.

## Products Images



Western blot analysis of lysates from HpeG2 cells, primary antibody was diluted at 1:1000, 4° over night