



ZN195 rabbit pAb

Catalog No	BYab-11068
Isotype	IgG
Reactivity	Human;Rat;Mouse;
Applications	WB
Gene Name	ZNF195 ZNFP104
Protein Name	ZN195
Immunogen	Synthesized peptide derived from human ZN195 AA range: 262-312
Specificity	This antibody detects endogenous levels of ZN195 at Human
Formulation	Liquid in PBS containing 50% glycerol, 0.5% BSA and 0.02% sodium azide.
Source	Polyclonal, Rabbit,IgG
Purification	The antibody was affinity-purified from rabbit serum by affinity-chromatography using specific immunogen.
Dilution	WB 1: 500-2000
Concentration	1 mg/ml
Purity	≥90%
Storage Stability	-20°C/1 year
Synonyms	
Observed Band	
Cell Pathway	Nucleus .
Tissue Specificity	Expressed in adult heart, brain, placenta, skeletal muscle and pancreas, and in fetal lung, kidney and brain. There is little expression in adult lung, liver and kidney.
Function	function:May be involved in transcriptional regulation.,similarity:Belongs to the krueppel C2H2-type zinc-finger protein family.,similarity:Contains 1 KRAB domain.,similarity:Contains 10 C2H2-type zinc fingers.,tissue specificity:Expressed in adult heart, brain, placenta, skeletal muscle and pancreas, and in fetal lung, kidney and brain. There is little expression in adult lung, liver and kidney.,
Background	This gene encodes a protein belonging to the Krueppel C2H2-type zinc-finger protein family. These family members are transcription factors that are implicated in a variety of cellular processes. This gene is located near the centromeric border of chromosome 11p15.5, next to an imprinted domain that is associated with

Nanjing BYabscience technology Co.,Ltd



maternal-specific loss of heterozygosity in Wilms's tumors. Alternative splicing results in multiple transcript variants. [provided by RefSeq, Feb 2012],

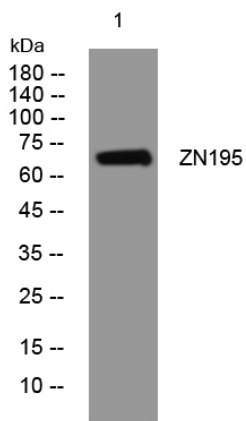
matters needing attention

Avoid repeated freezing and thawing!

Usage suggestions

This product can be used in immunological reaction related experiments. For more information, please consult technical personnel.

Products Images



Western blot analysis of lysates from THP-1 cells, primary antibody was diluted at 1:1000, 4° over night