



# K1731 rabbit pAb

<b>Catalog No</b>	BYab-11060
<b>Isotype</b>	IgG
<b>Reactivity</b>	Human; Mouse;Rat
<b>Applications</b>	IHC;IF
<b>Gene Name</b>	KIAA1731
<b>Protein Name</b>	K1731
<b>Immunogen</b>	Synthesized peptide derived from human K1731 AA range: 208-258
<b>Specificity</b>	This antibody detects endogenous levels of K1731 at Human/Mouse/Rat
<b>Formulation</b>	Liquid in PBS containing 50% glycerol, 0.5% BSA and 0.02% sodium azide.
<b>Source</b>	Polyclonal, Rabbit,IgG
<b>Purification</b>	The antibody was affinity-purified from rabbit serum by affinity-chromatography using specific immunogen.
<b>Dilution</b>	IHC-p 1: 50-200. IF 1:50-200
<b>Concentration</b>	1 mg/ml
<b>Purity</b>	≥90%
<b>Storage Stability</b>	-20°C/1 year
<b>Synonyms</b>	
<b>Observed Band</b>	
<b>Cell Pathway</b>	Cytoplasm, cytoskeleton, microtubule organizing center, centrosome, centriole . Cytoplasm, cytoskeleton, microtubule organizing center, centrosome . Cytoplasm, cytoskeleton, spindle . Cytoplasm, cytoskeleton . Associates with both of the converted centrioles during G1 but becomes more enriched at the newly formed daughter (or unconverted) centrioles during S, G2, and early M phases (PubMed:25131205, PubMed:32060285). In early S phase, localized at the procentriolar microtubule wall and enriched at the proximal ends of the centrioles in CENPJ- and CEP135-dependent manner (PubMed:27185865). Colocalizes with SASS6 and CEP250 proteins (PubMed:25131205). Colocalizes with CEP135 and CEP192 at the centrosomes (PubMed:27185865). Associates with interphase microtubules and mitotic spindles (PubMed:)
<b>Tissue Specificity</b>	
<b>Function</b>	sequence caution:Translation N-terminally shortened.,similarity:Contains 7 LRR (leucine-rich) repeats.,

Nanjing BYabscience technology Co.,Ltd



## Background

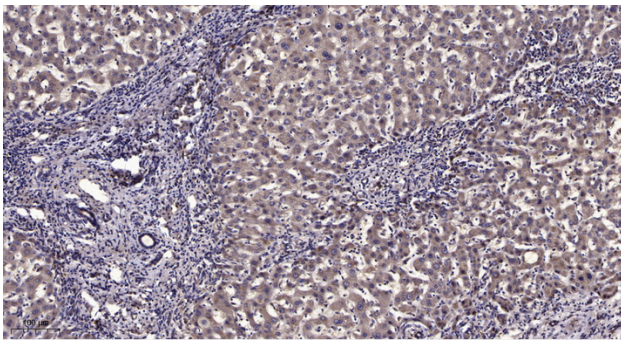
### matters needing attention

Avoid repeated freezing and thawing!

### Usage suggestions

This product can be used in immunological reaction related experiments. For more information, please consult technical personnel.

## Products Images



Immunohistochemical analysis of paraffin-embedded human liver cancer. 1, Antibody was diluted at 1:200(4° overnight). 2, Tris-EDTA,pH9.0 was used for antigen retrieval. 3,Secondary antibody was diluted at 1:200(room temperature, 45min).