



ICT1 rabbit pAb

Catalog No	BYab-11056
Isotype	IgG
Reactivity	Human; Mouse
Applications	WB
Gene Name	ICT1 DS1
Protein Name	ICT1
Immunogen	Synthesized peptide derived from human ICT1 AA range: 7-57
Specificity	This antibody detects endogenous levels of ICT1 at Human/Mouse
Formulation	Liquid in PBS containing 50% glycerol, 0.5% BSA and 0.02% sodium azide.
Source	Polyclonal, Rabbit,IgG
Purification	The antibody was affinity-purified from rabbit serum by affinity-chromatography using specific immunogen.
Dilution	WB 1: 500-2000
Concentration	1 mg/ml
Purity	≥90%
Storage Stability	-20°C/1 year
Synonyms	
Observed Band	
Cell Pathway	Mitochondrion .
Tissue Specificity	Down-regulated during the in vitro differentiation of HT29-D4 colon carcinoma cells.
Function	similarity:Belongs to the prokaryotic/mitochondrial release factor family.,tissue specificity:Down-regulated during the in vitro differentiation of HT29-D4 colon carcinoma cells.,
Background	The protein encoded by this gene is a peptidyl-tRNA hydrolase and a vital component of the large mitochondrial ribosome. The encoded protein serves as a ribosome release factor for this ribosome, which translates mitochondrial genes. This protein may be responsible for degrading prematurely-terminated polypeptides and for reusing stalled ribosomes. Two transcript variants encoding different isoforms have been found for this gene. [provided by RefSeq, Dec 2014],

Nanjing BYabscience technology Co.,Ltd



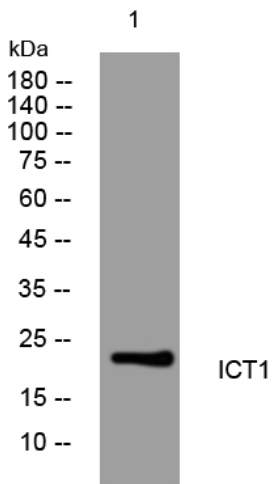
matters needing attention

Avoid repeated freezing and thawing!

Usage suggestions

This product can be used in immunological reaction related experiments. For more information, please consult technical personnel.

Products Images



Western blot analysis of lysates from KB cells, primary antibody was diluted at 1:1000, 4° over night