



OSBL8 rabbit pAb

Catalog No	BYab-11044
Isotype	IgG
Reactivity	Human;Rat;Mouse;
Applications	WB
Gene Name	OSBPL8 KIAA1451 ORP8 OSBP10
Protein Name	OSBL8
Immunogen	Synthesized peptide derived from human OSBL8 AA range: 290-340
Specificity	This antibody detects endogenous levels of OSBL8 at Human
Formulation	Liquid in PBS containing 50% glycerol, 0.5% BSA and 0.02% sodium azide.
Source	Polyclonal, Rabbit,IgG
Purification	The antibody was affinity-purified from rabbit serum by affinity-chromatography using specific immunogen.
Dilution	WB 1: 500-2000
Concentration	1 mg/ml
Purity	≥90%
Storage Stability	-20°C/1 year
Synonyms	
Observed Band	
Cell Pathway	[Isoform 1]: Endoplasmic reticulum membrane ; Single-pass membrane protein . Nucleus membrane . The presence of the N-terminus extension contains an overall negative charge that may explain the weak localization to the cortical endoplasmic reticulum (Probable) . ; [Isoform 3]: Endoplasmic reticulum membrane ; Single-pass membrane protein. Localizes to the cortical endoplasmic reticulum at the endoplasmic reticulum-plasma membrane contact sites. .
Tissue Specificity	Widely expressed (PubMed:11735225). Expressed at higher level in macrophages (PubMed:17991739).
Function	similarity:Belongs to the OSBP family.,similarity:Contains 1 PH domain.,tissue specificity:Widely expressed.,
Background	This gene encodes a member of a family of proteins containing an N-terminal pleckstrin homology domain and a highly conserved C-terminal oxysterol-binding protein-like sterol-binding domain. It binds multiple lipid-containing molecules, including phosphatidylserine, phosphatidylinositol 4-phosphate (PI4P) and oxysterol, and promotes their exchange between the endoplasmic reticulum and

Nanjing BYabscience technology Co.,Ltd



the plasma membrane. Alternative splicing results in multiple transcript variants. [provided by RefSeq, Feb 2016],

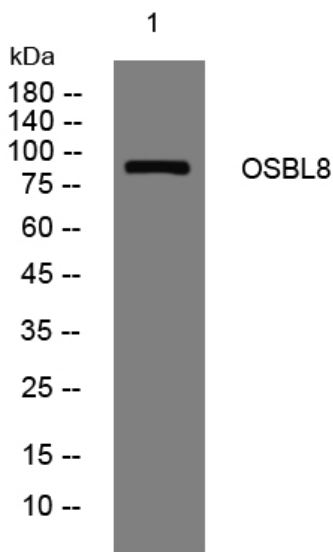
matters needing attention

Avoid repeated freezing and thawing!

Usage suggestions

This product can be used in immunological reaction related experiments. For more information, please consult technical personnel.

Products Images



Western blot analysis of lysates from CACO2 cells, primary antibody was diluted at 1:1000, 4° over night