



# ASTL rabbit pAb

<b>Catalog No</b>	BYab-11038
<b>Isotype</b>	IgG
<b>Reactivity</b>	Human; Mouse
<b>Applications</b>	WB
<b>Gene Name</b>	ASTL
<b>Protein Name</b>	ASTL
<b>Immunogen</b>	Synthesized peptide derived from human ASTL AA range: 115-165
<b>Specificity</b>	This antibody detects endogenous levels of ASTL at Human/Mouse
<b>Formulation</b>	Liquid in PBS containing 50% glycerol, 0.5% BSA and 0.02% sodium azide.
<b>Source</b>	Polyclonal, Rabbit,IgG
<b>Purification</b>	The antibody was affinity-purified from rabbit serum by affinity-chromatography using specific immunogen.
<b>Dilution</b>	WB 1: 500-2000
<b>Concentration</b>	1 mg/ml
<b>Purity</b>	≥90%
<b>Storage Stability</b>	-20°C/1 year
<b>Synonyms</b>	
<b>Observed Band</b>	
<b>Cell Pathway</b>	Cytoplasm . Cell membrane . Cytoplasmic vesicle, secretory vesicle, Cortical granule . Probably exocytosed from cortical granules during post-fertilization. Detected throughout the ooplasm of germinal vesicle stage oocytes in early bilaminar secondary follicles at postnatal (PN) day 3. Detected in the microvillar domain of the oolemma in arrested ovulated secondary oocytes and in the first polar body prior to fertilization. Upon fertilization, detected in the perivitelline space (PVS) and occasionally on the oolemma in 2-cell through morulae stages. Colocalizes with SPACA3 at the microvillar domain of the oolemma and in the perivitelline space (PVS). .
<b>Tissue Specificity</b>	Expressed in promyelocytic leukemia HL-60 cells, Burkitt's lymphoma Raji cells, and also in some ovarian carcinomas. Not detected in normal tissues.
<b>Function</b>	enzyme regulation:Inhibited by wide spectrum metalloproteinase inhibitor batimastat (BB-94). Also inhibited by EDTA.,similarity:Belongs to the peptidase M12A family.,tissue specificity:Expressed in promyelocytic leukemia HL-60 cells, Burkitt's lymphoma Raji cells, and also in some ovarian carcinomas. Not detected

Nanjing BYabscience technology Co.,Ltd



in normal tissues.,

## Background

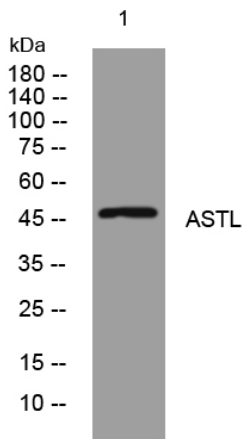
### matters needing attention

Avoid repeated freezing and thawing!

### Usage suggestions

This product can be used in immunological reaction related experiments. For more information, please consult technical personnel.

## Products Images



Western blot analysis of lysates from HEK293 cells, primary antibody was diluted at 1:1000, 4° over night