



# OTOGL rabbit pAb

<b>Catalog No</b>	BYab-11033
<b>Isotype</b>	IgG
<b>Reactivity</b>	Human;Rat;Mouse;
<b>Applications</b>	WB
<b>Gene Name</b>	OTOGL C12orf64
<b>Protein Name</b>	OTOGL
<b>Immunogen</b>	Synthesized peptide derived from human OTOGL AA range: 584-634
<b>Specificity</b>	This antibody detects endogenous levels of OTOGL at Human
<b>Formulation</b>	Liquid in PBS containing 50% glycerol, 0.5% BSA and 0.02% sodium azide.
<b>Source</b>	Polyclonal, Rabbit,IgG
<b>Purification</b>	The antibody was affinity-purified from rabbit serum by affinity-chromatography using specific immunogen.
<b>Dilution</b>	WB 1: 500-2000
<b>Concentration</b>	1 mg/ml
<b>Purity</b>	≥90%
<b>Storage Stability</b>	-20°C/1 year
<b>Synonyms</b>	
<b>Observed Band</b>	
<b>Cell Pathway</b>	Secreted .
<b>Tissue Specificity</b>	Expressed at high levels in fetal inner ear and heart. Low levels in fetal skeletal muscle, kidney, spleen and colon. Not detected in fetal liver, lung, brain, nor in fetal stomach. In adult tissues, highest levels in brain, kidney, heart and retina. Relatively low levels in lung, spleen and duodenum. Not detected in adult skeletal muscle, liver, nor testis.
<b>Function</b>	similarity:Belongs to the otogelin family.,similarity:Contains 1 CTCK (C-terminal cystine knot-like) domain.,similarity:Contains 1 VWFD domain.,
<b>Background</b>	The protein encoded by this gene belongs to the otogelin family. This gene is expressed in the inner ear of vertebrates with the highest level of expression seen at the embryonic stage and lowest in adult. Knockdown studies in zebrafish suggest that this gene is essential for normal inner ear function. Mutations in this gene are associated with autosomal recessive deafness. [provided by RefSeq, Dec 2012],

Nanjing BYabscience technology Co.,Ltd



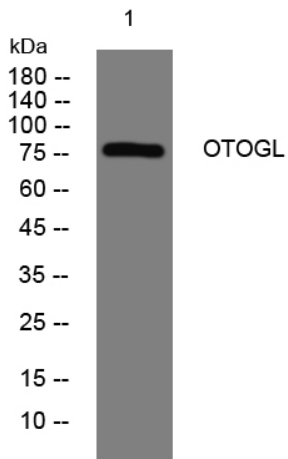
**matters needing attention**

Avoid repeated freezing and thawing!

**Usage suggestions**

This product can be used in immunological reaction related experiments. For more information, please consult technical personnel.

**Products Images**



Western blot analysis of lysates from PC-12 cells, primary antibody was diluted at 1:1000, 4° over night