



# ANXA8 rabbit pAb

<b>Catalog No</b>	BYab-11027
<b>Isotype</b>	IgG
<b>Reactivity</b>	Human; Mouse;Rat
<b>Applications</b>	WB
<b>Gene Name</b>	ANXA8 ANX8
<b>Protein Name</b>	ANXA8
<b>Immunogen</b>	Synthesized peptide derived from human ANXA8 AA range: 244-294
<b>Specificity</b>	This antibody detects endogenous levels of ANXA8 at Human/Mouse/Rat
<b>Formulation</b>	Liquid in PBS containing 50% glycerol, 0.5% BSA and 0.02% sodium azide.
<b>Source</b>	Polyclonal, Rabbit,IgG
<b>Purification</b>	The antibody was affinity-purified from rabbit serum by affinity-chromatography using specific immunogen.
<b>Dilution</b>	WB 1: 500-2000
<b>Concentration</b>	1 mg/ml
<b>Purity</b>	≥90%
<b>Storage Stability</b>	-20°C/1 year
<b>Synonyms</b>	
<b>Observed Band</b>	
<b>Cell Pathway</b>	cytosol,plasma membrane,late endosome membrane,
<b>Tissue Specificity</b>	
<b>Function</b>	domain:A pair of annexin repeats may form one binding site for calcium and phospholipid.,function:This protein is an anticoagulant protein that acts as an indirect inhibitor of the thromboplastin-specific complex, which is involved in the blood coagulation cascade.,similarity:Belongs to the annexin family.,similarity:Contains 4 annexin repeats.,
<b>Background</b>	This gene encodes a member of the annexin family of evolutionarily conserved Ca <sup>2+</sup> and phospholipid binding proteins. The encoded protein may function as an anticoagulant that indirectly inhibits the thromboplastin-specific complex. Overexpression of this gene has been associated with acute myelocytic leukemia. A highly similar duplicated copy of this gene is found in close proximity on the long arm of chromosome 10. [provided by RefSeq, Jul 2008],

Nanjing BYabscience technology Co.,Ltd



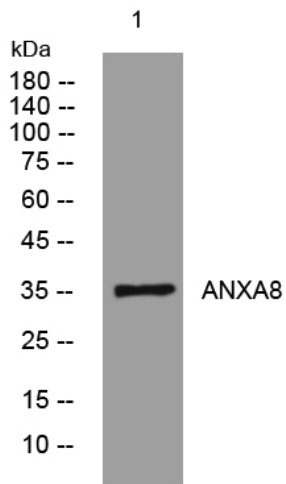
**matters needing attention**

Avoid repeated freezing and thawing!

**Usage suggestions**

This product can be used in immunological reaction related experiments. For more information, please consult technical personnel.

## Products Images



Western blot analysis of lysates from K562 cells, primary antibody was diluted at 1:1000, 4° over night